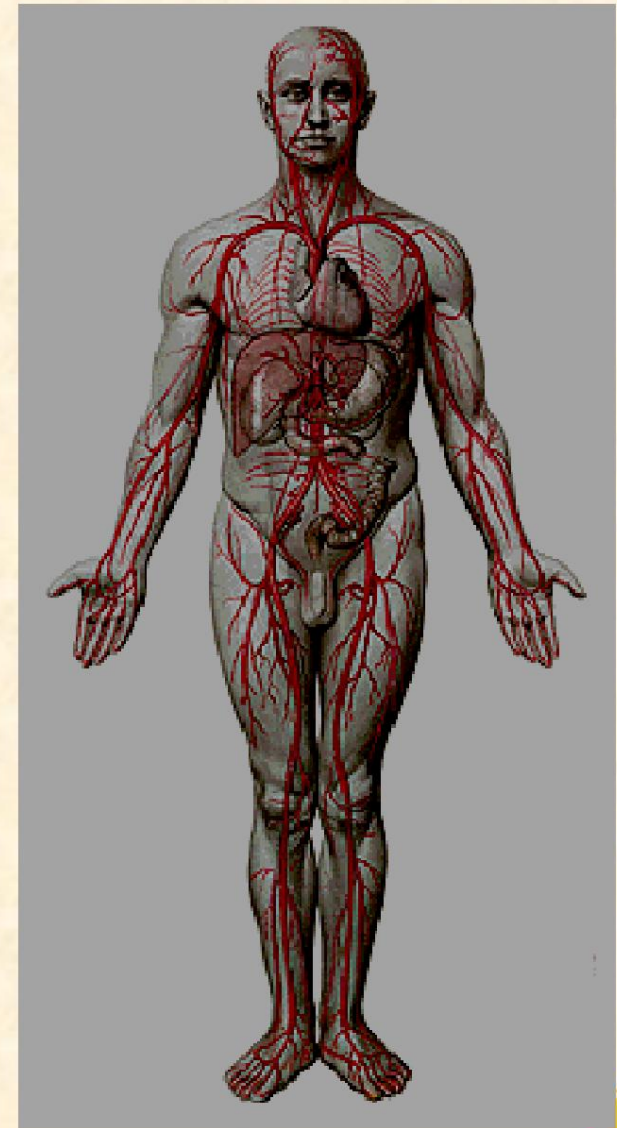


CIRCULATORY SYSTEM **– blood vessels**

Agata Przyborska, MD, PhD



Capillaries:

- **They create the so-called microcirculation, and its components are:**

Metarterioles - enable rapid blood flow from the arterial to the venous bed, bypassing the nutritional vessels

- **thanks to sphincters remaining under nervous control
precapillary**

Capillaries, the actual capillaries - branches of metaarteriols

Veins

- **Venules from the capillary bed join - veins:**
Thin-walled, mainly elastic fibers and collagen
These are the so-called volumetric vessels – collect approximately 65% of blood
- **Large diameter – low resistance – low pressure**
- **The presence of valves helps in the flow of blood to the heart**

Pulse test

temporal t

t. facial

cervical t

brachial t

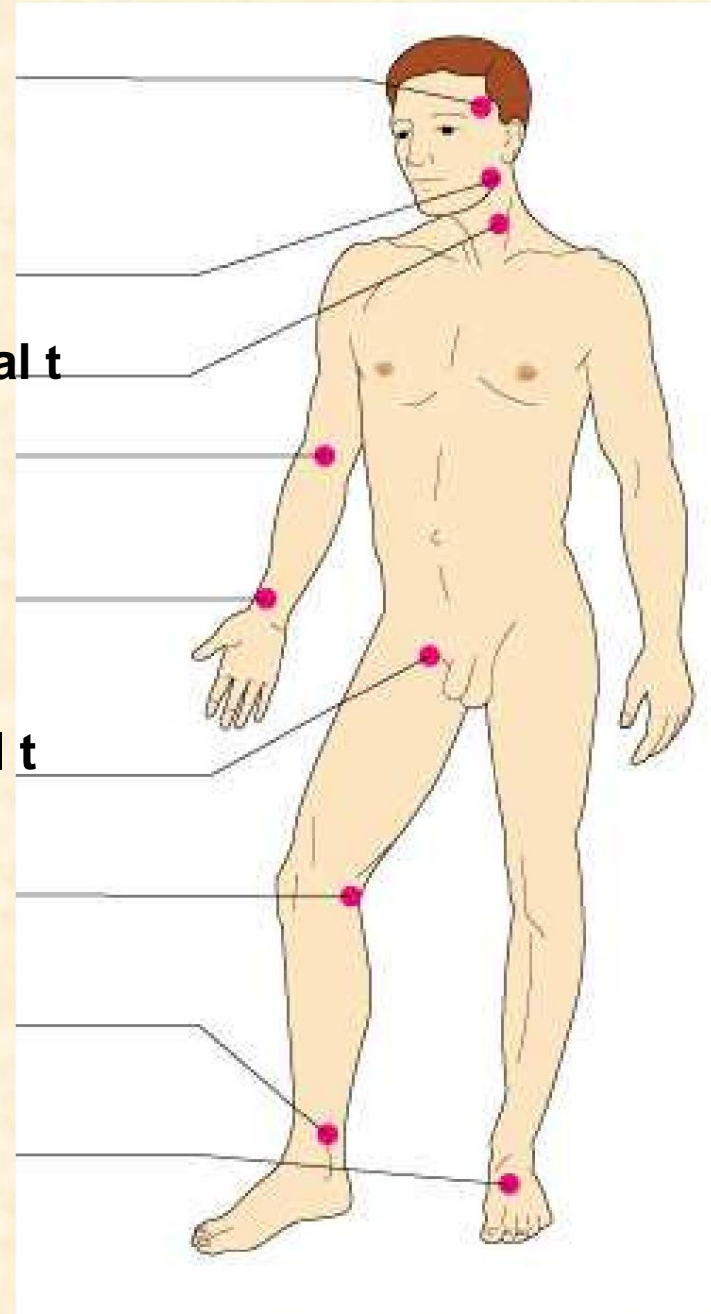
radial t

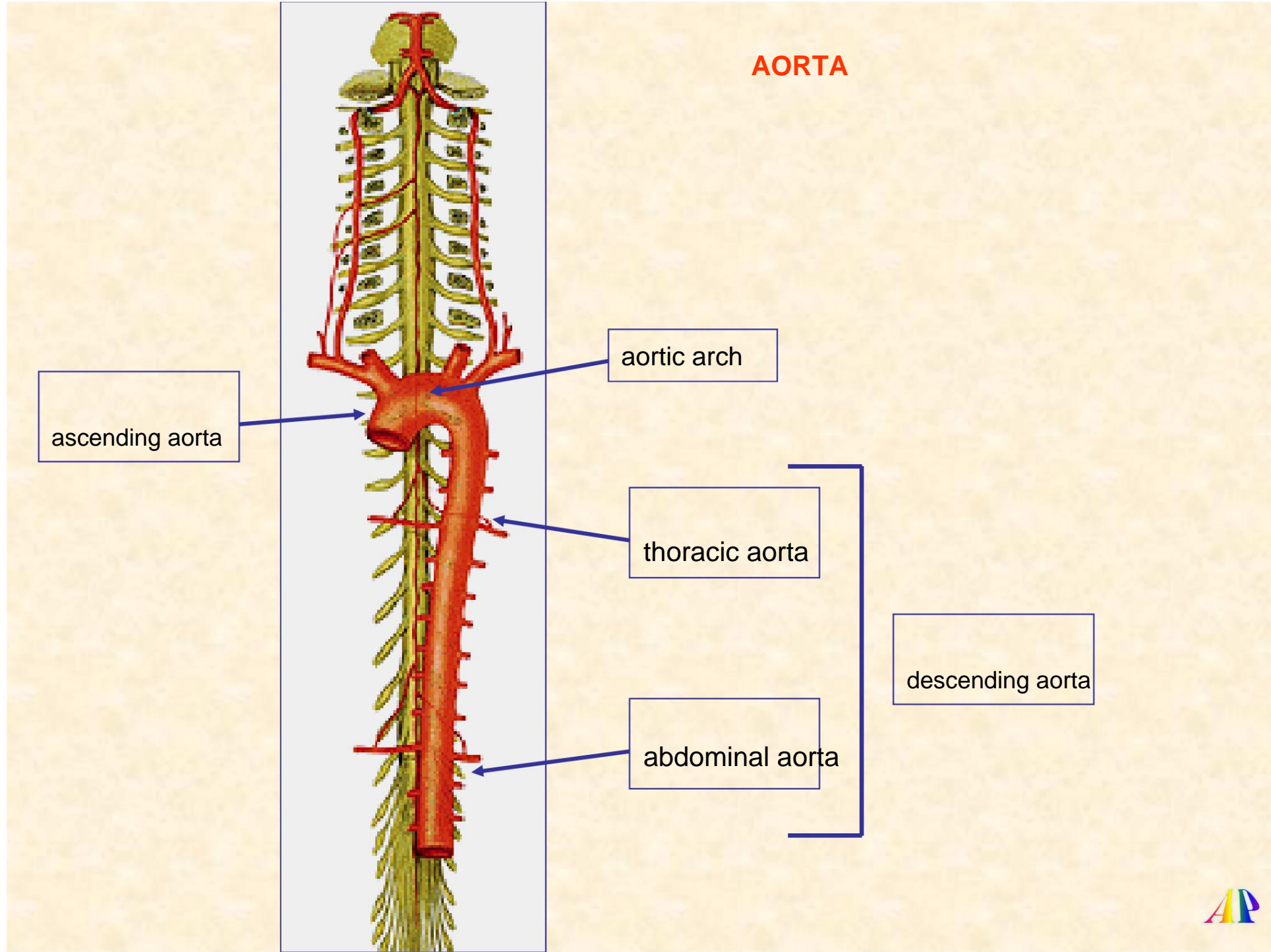
femoral t

popliteal t

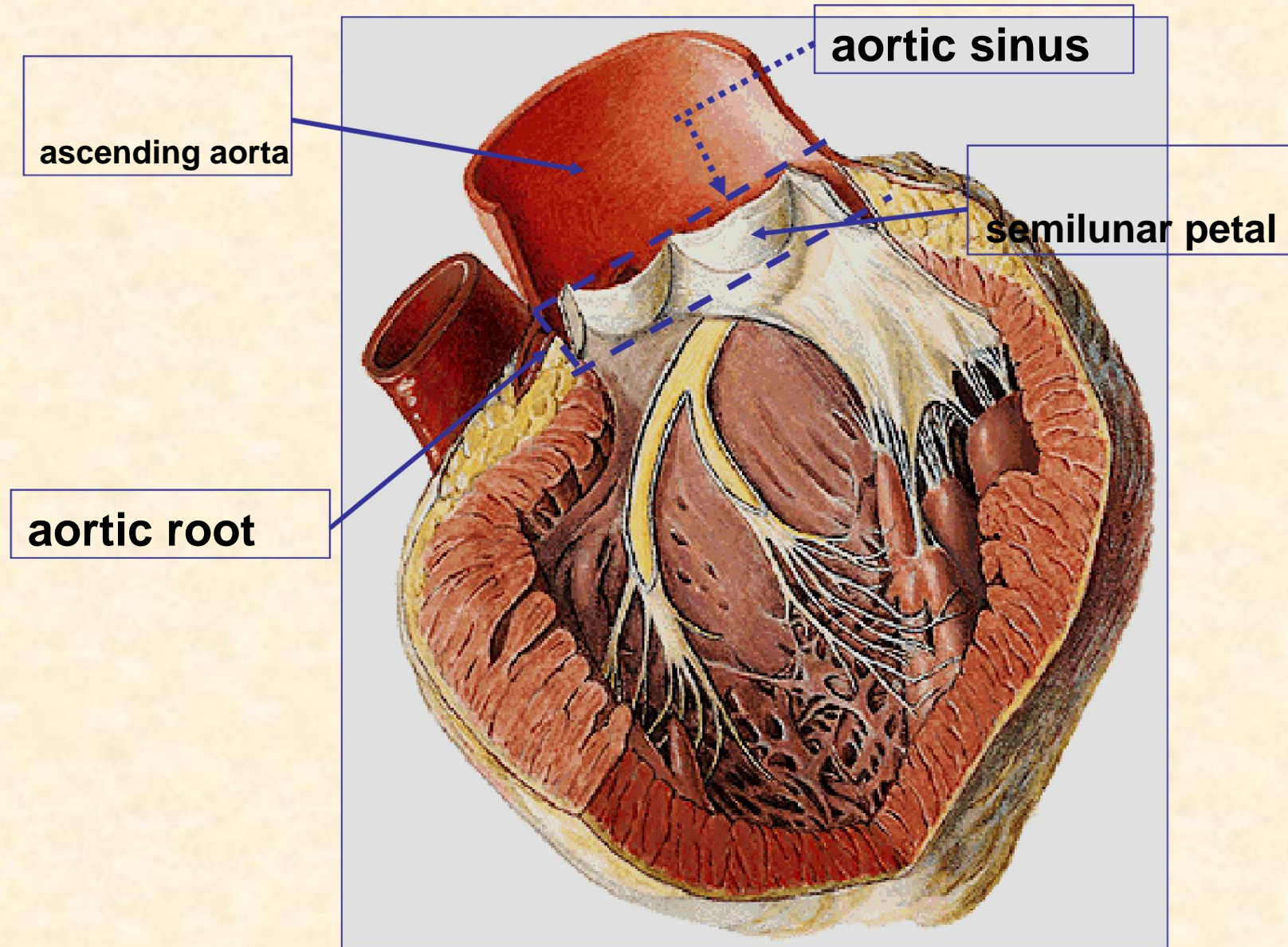
tibial t

dorsal foot t

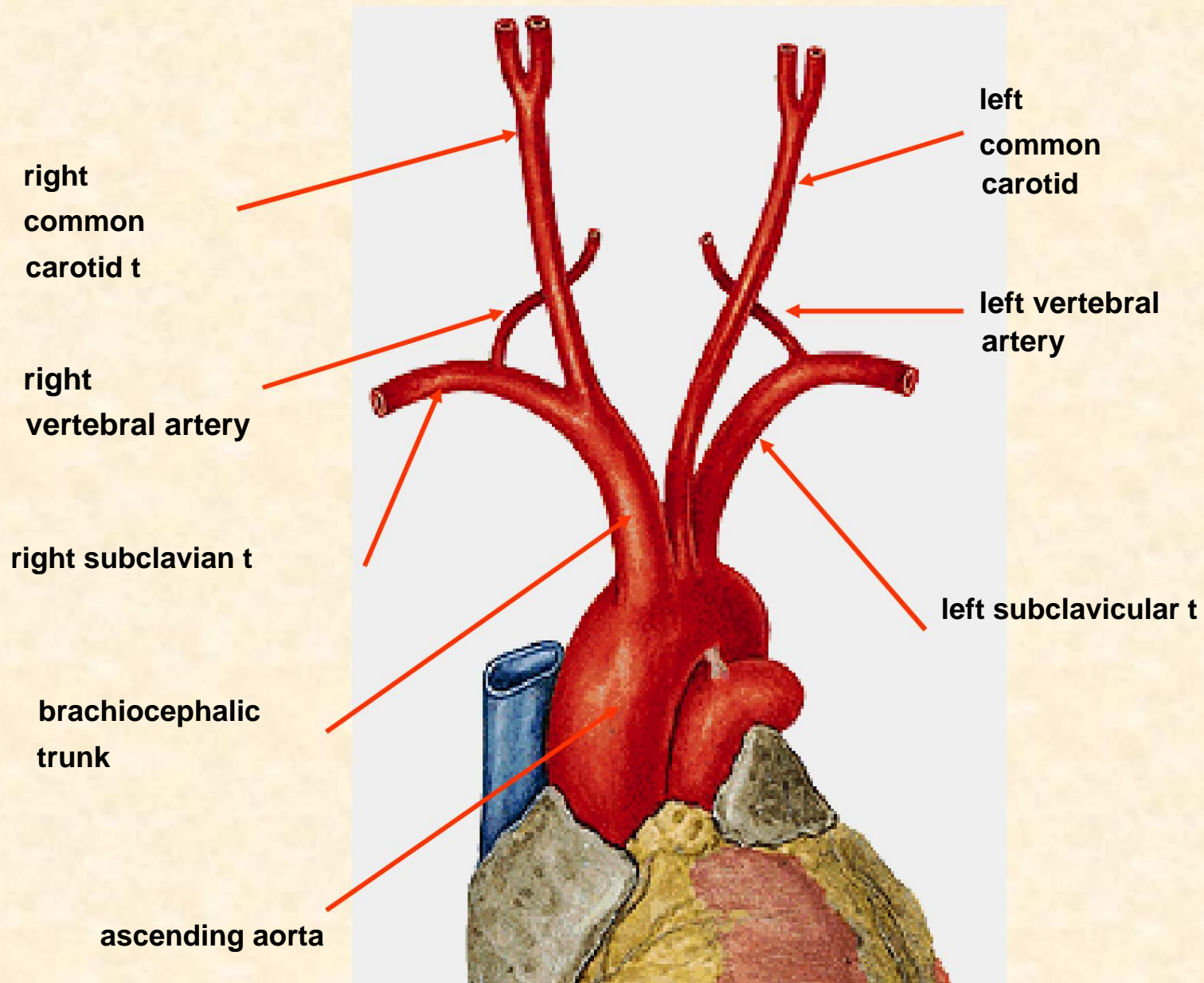




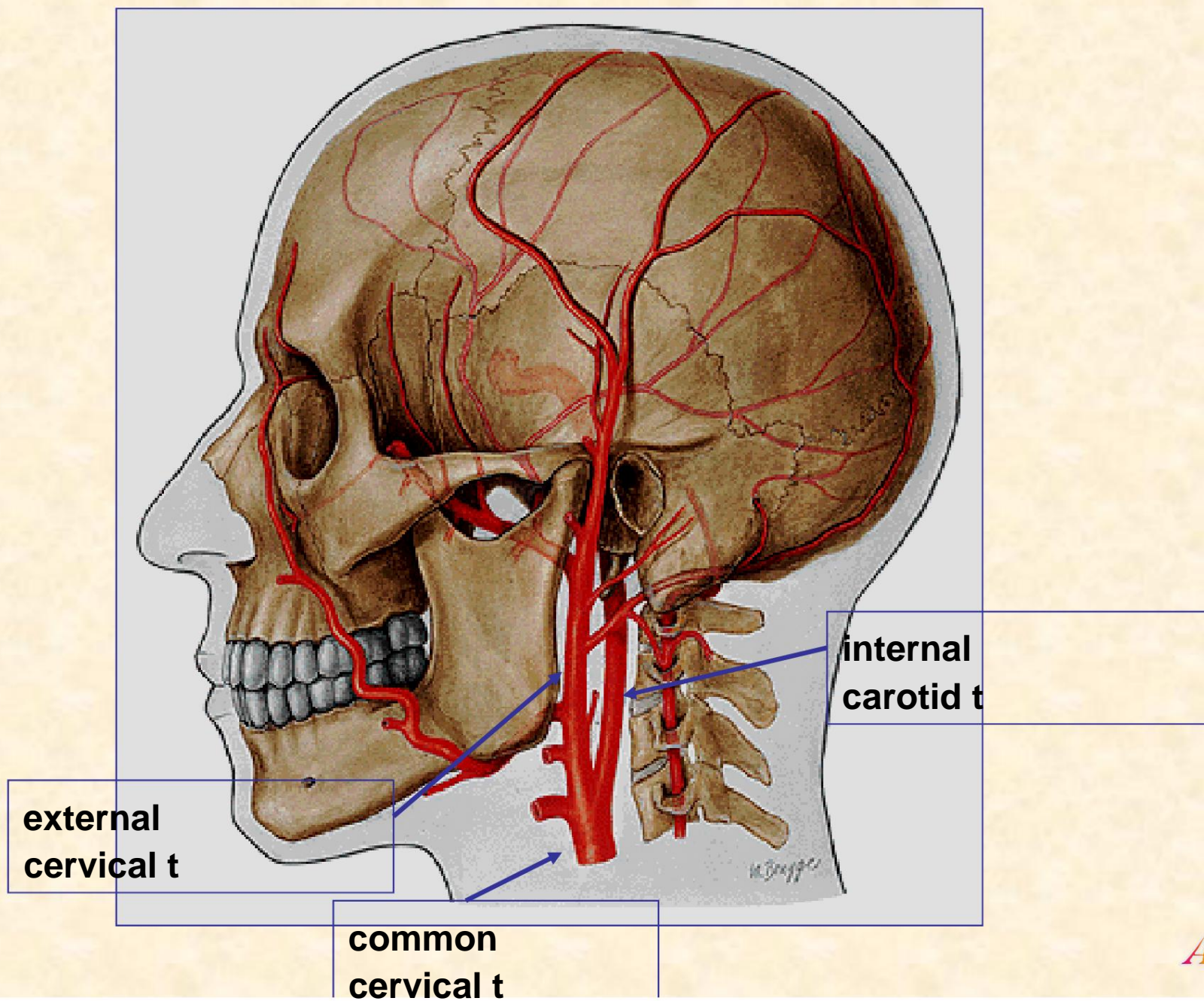
ASCENDING AORTA



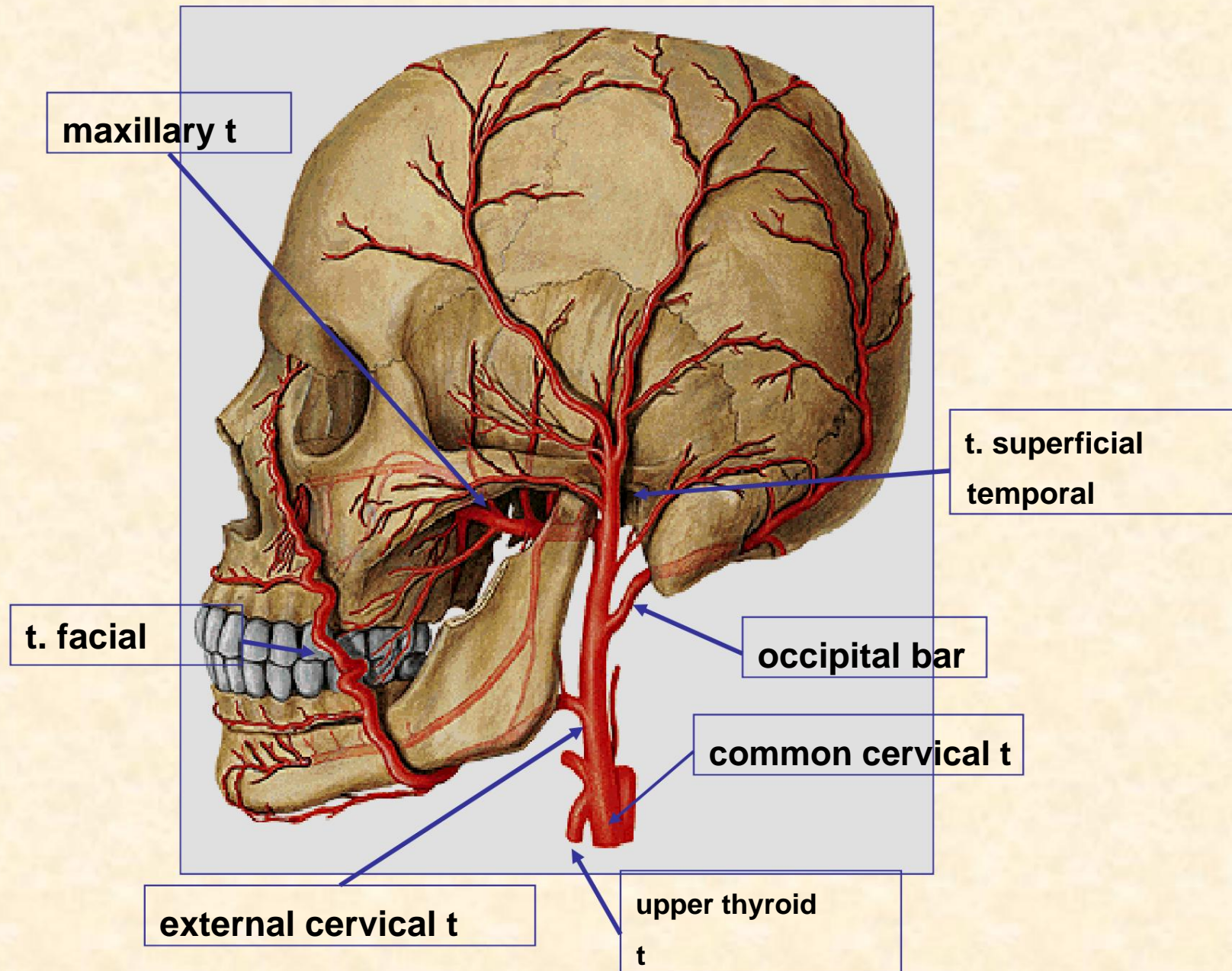
AORTIC ARCH



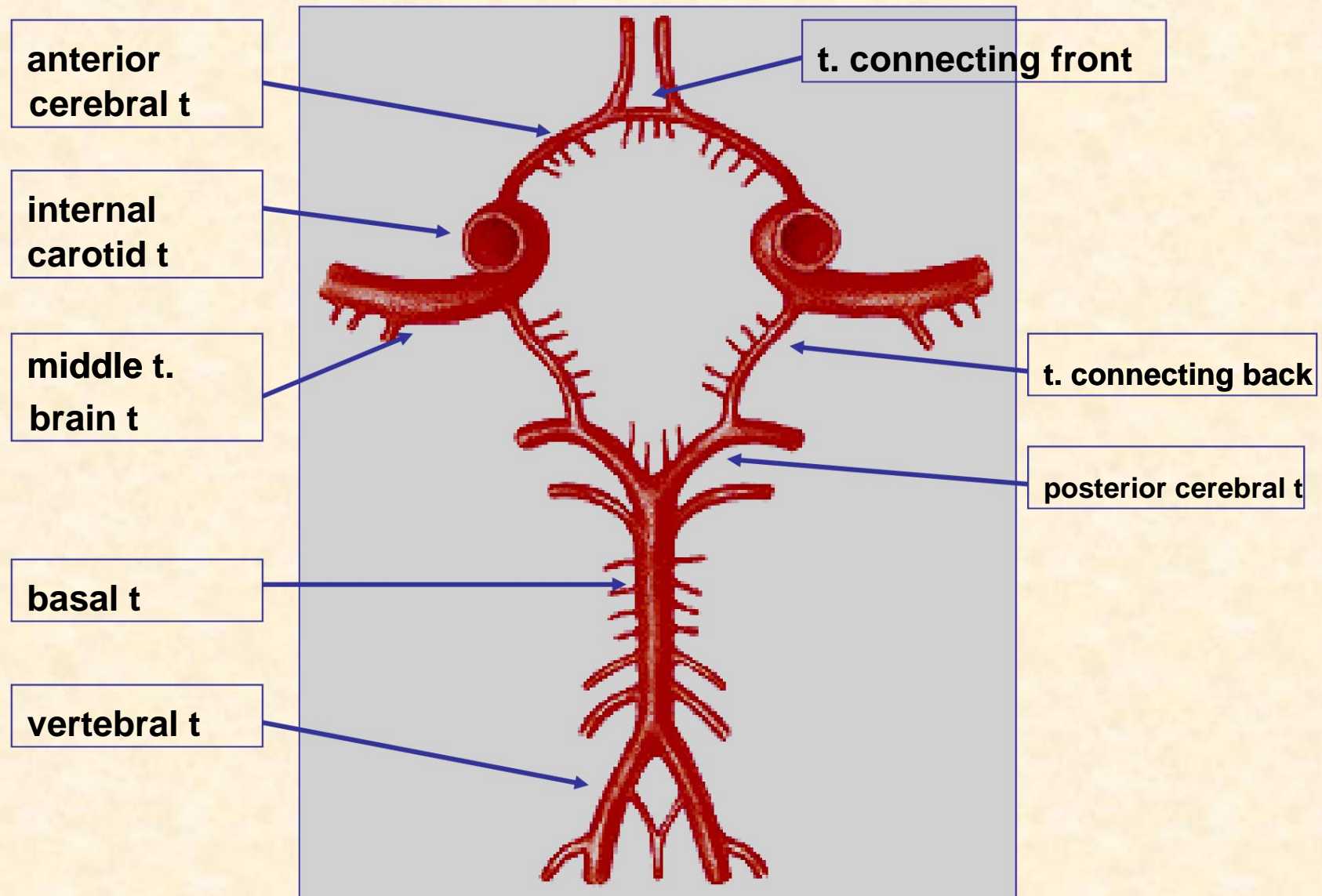
COMMON CAROTID ARTERY



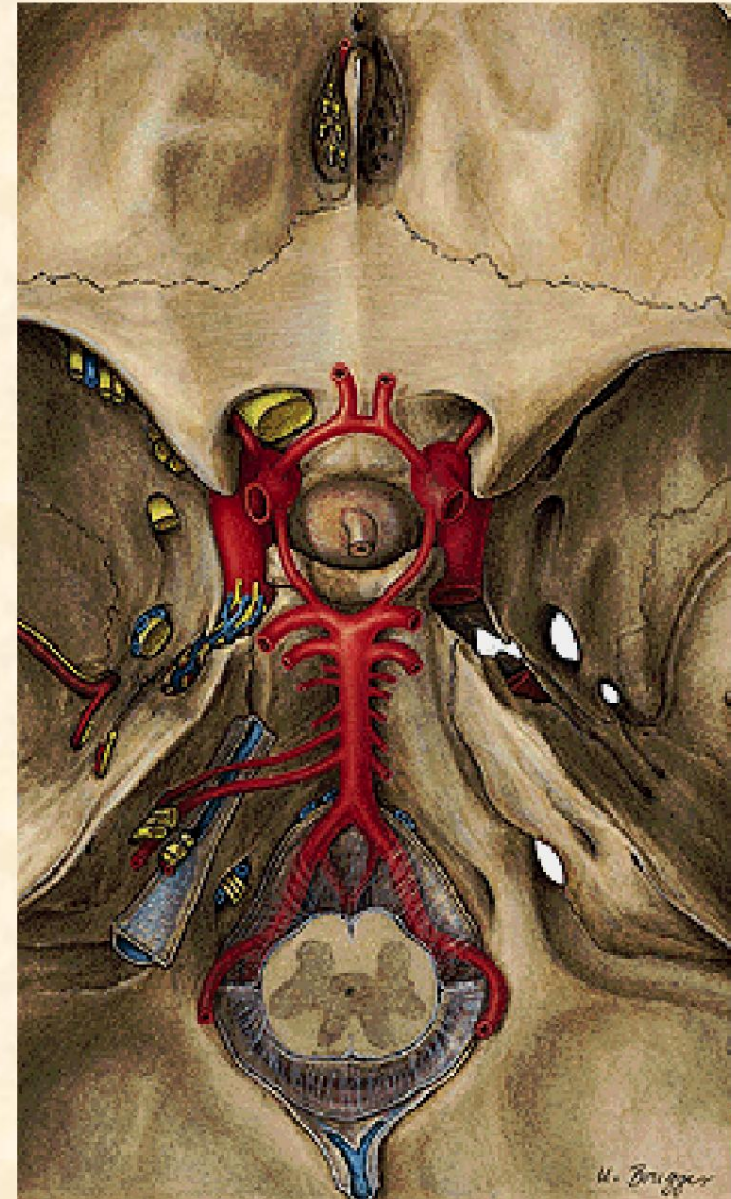
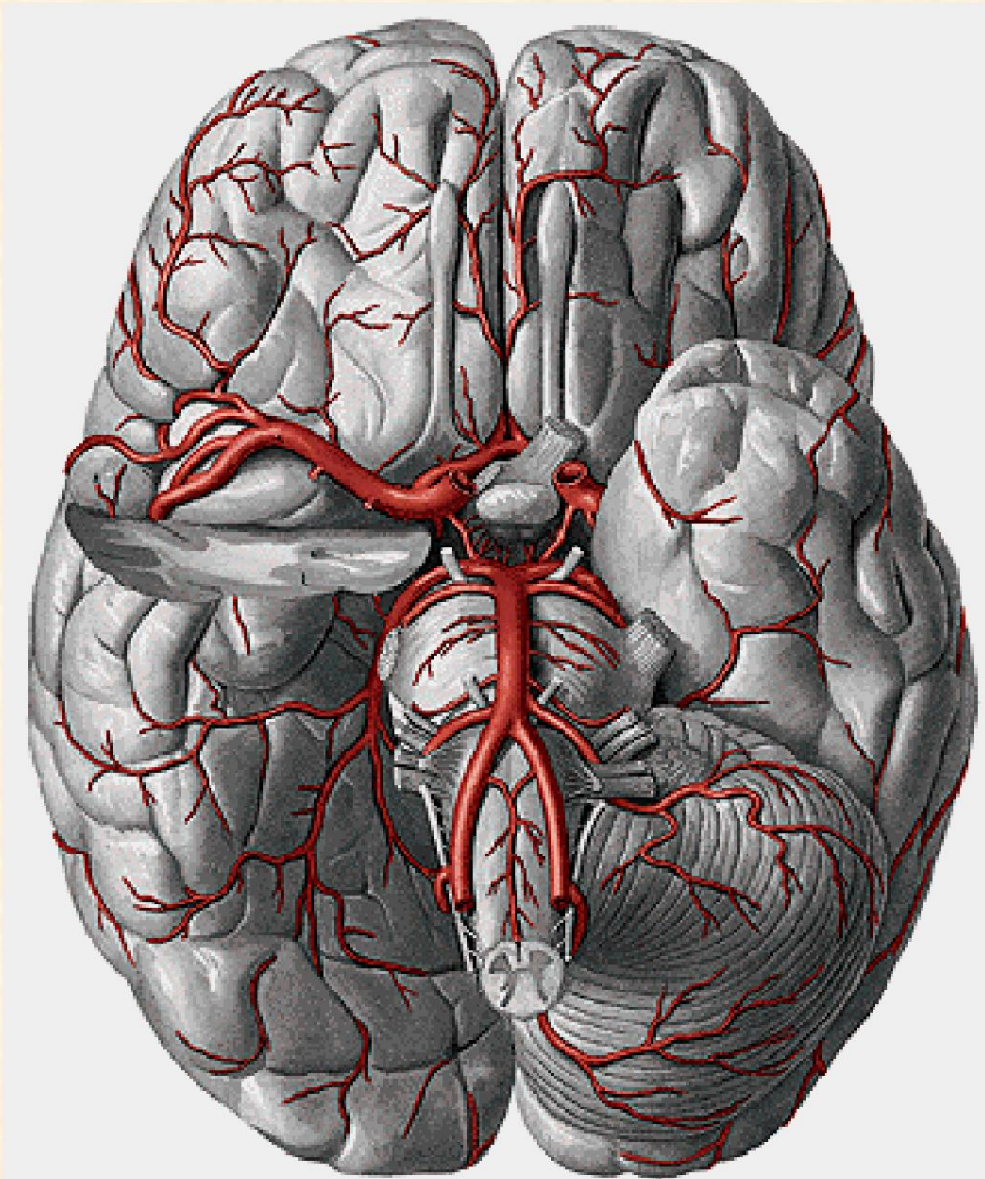
EXTERNAL CAROTID ARTERY



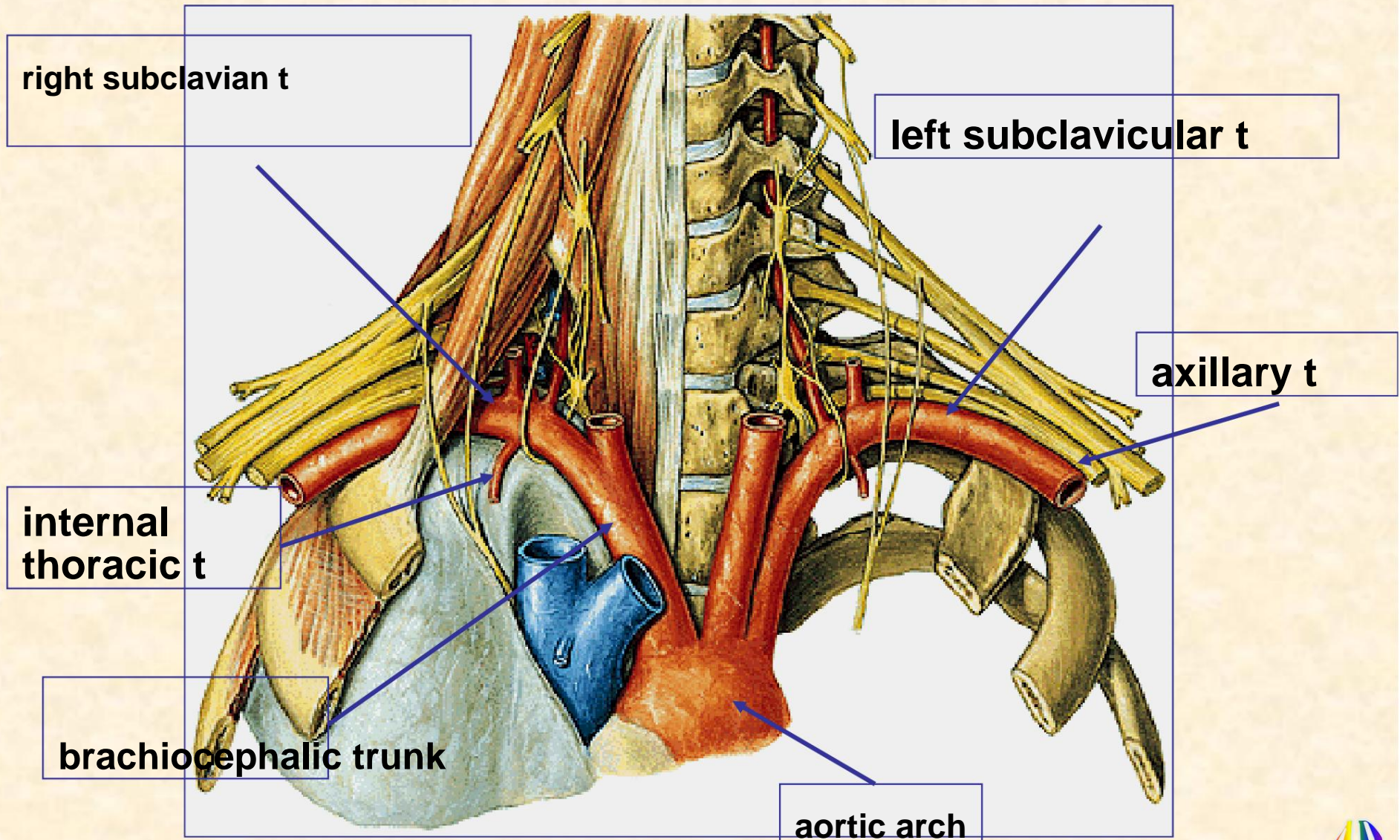
INTERNAL CAROTID ARTERY, arterial circle of the brain



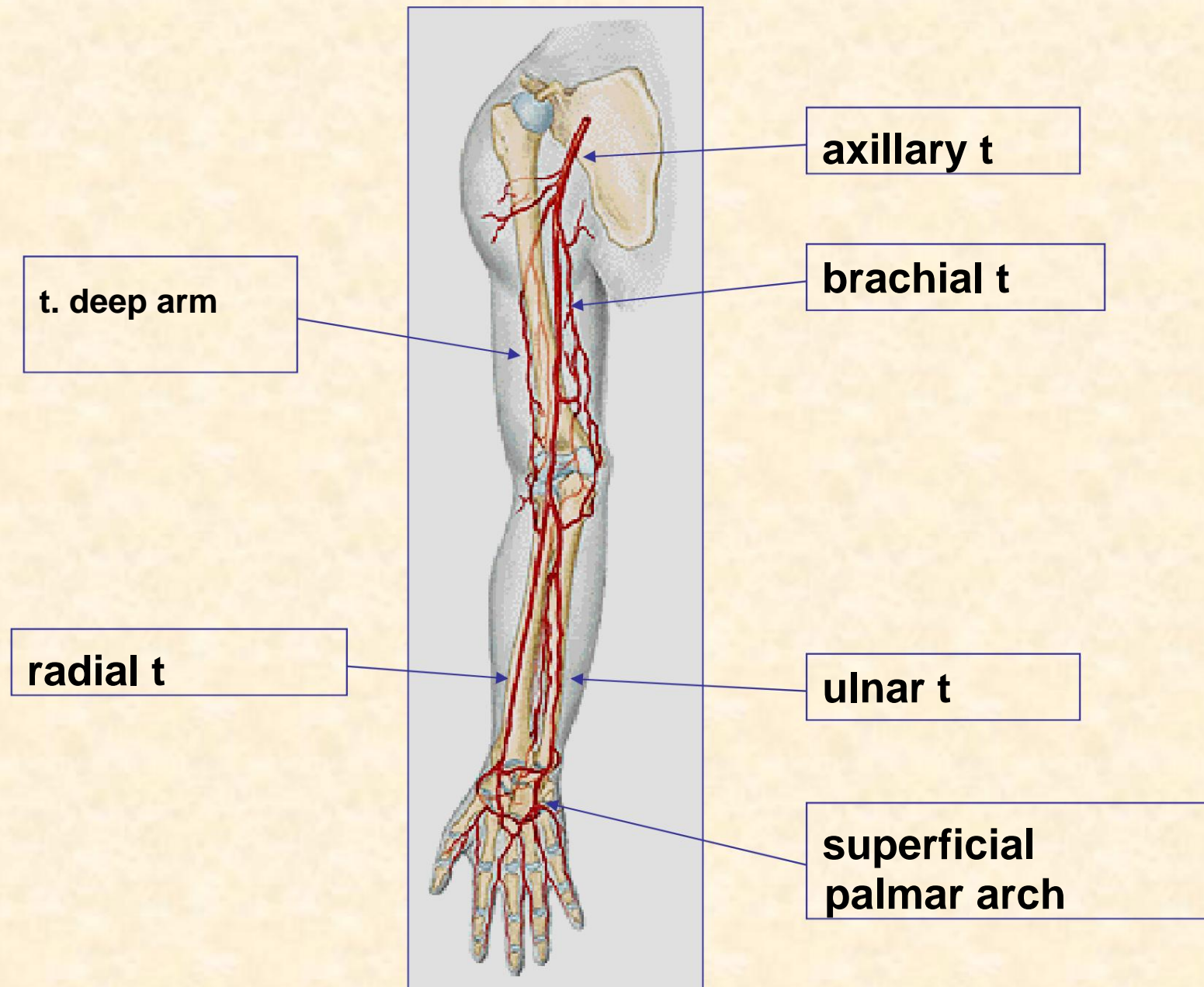
INTERNAL CAROTID ARTERY, arterial circle of the brain



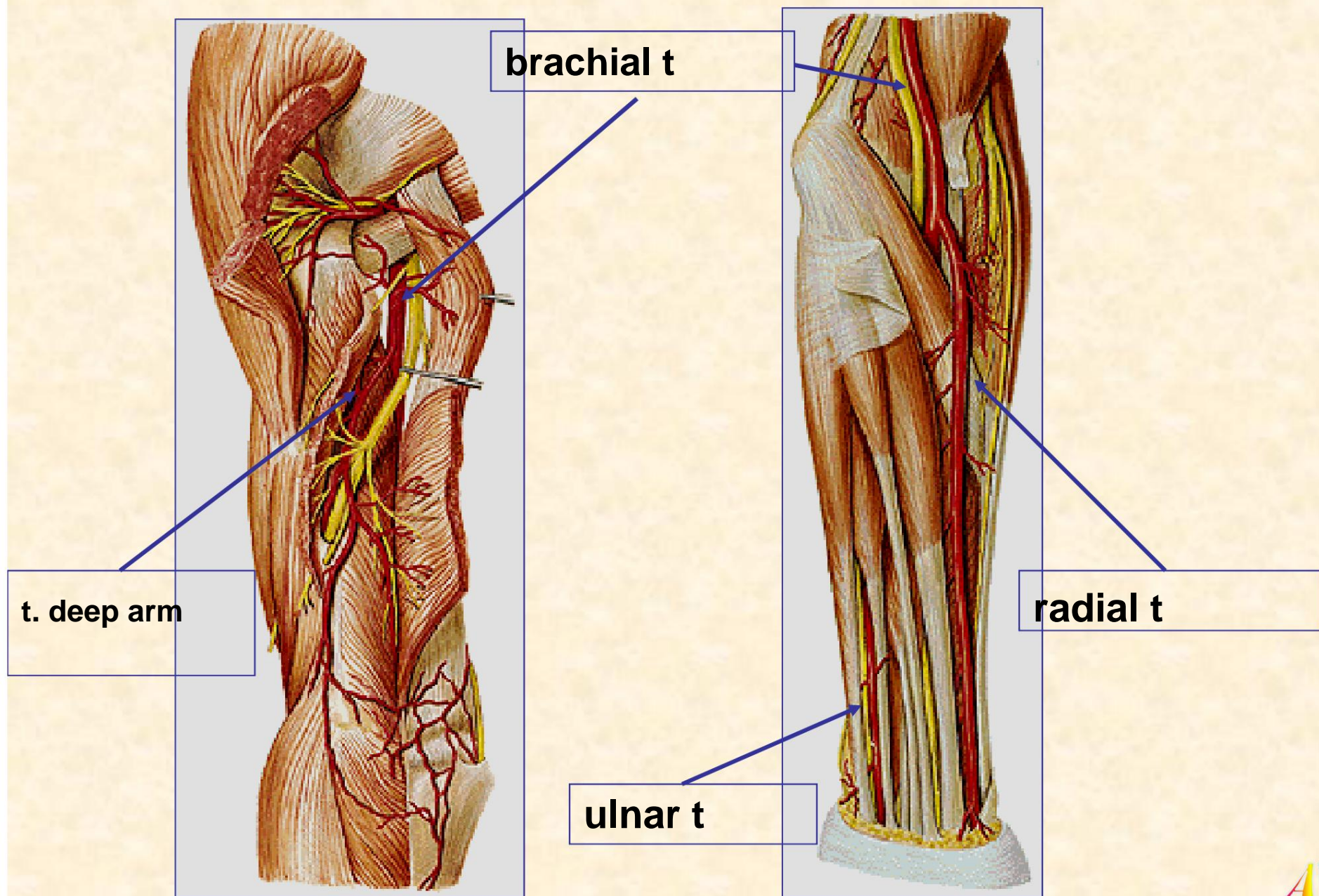
ARTERY VASCULARITY OF THE UPPER LIMB



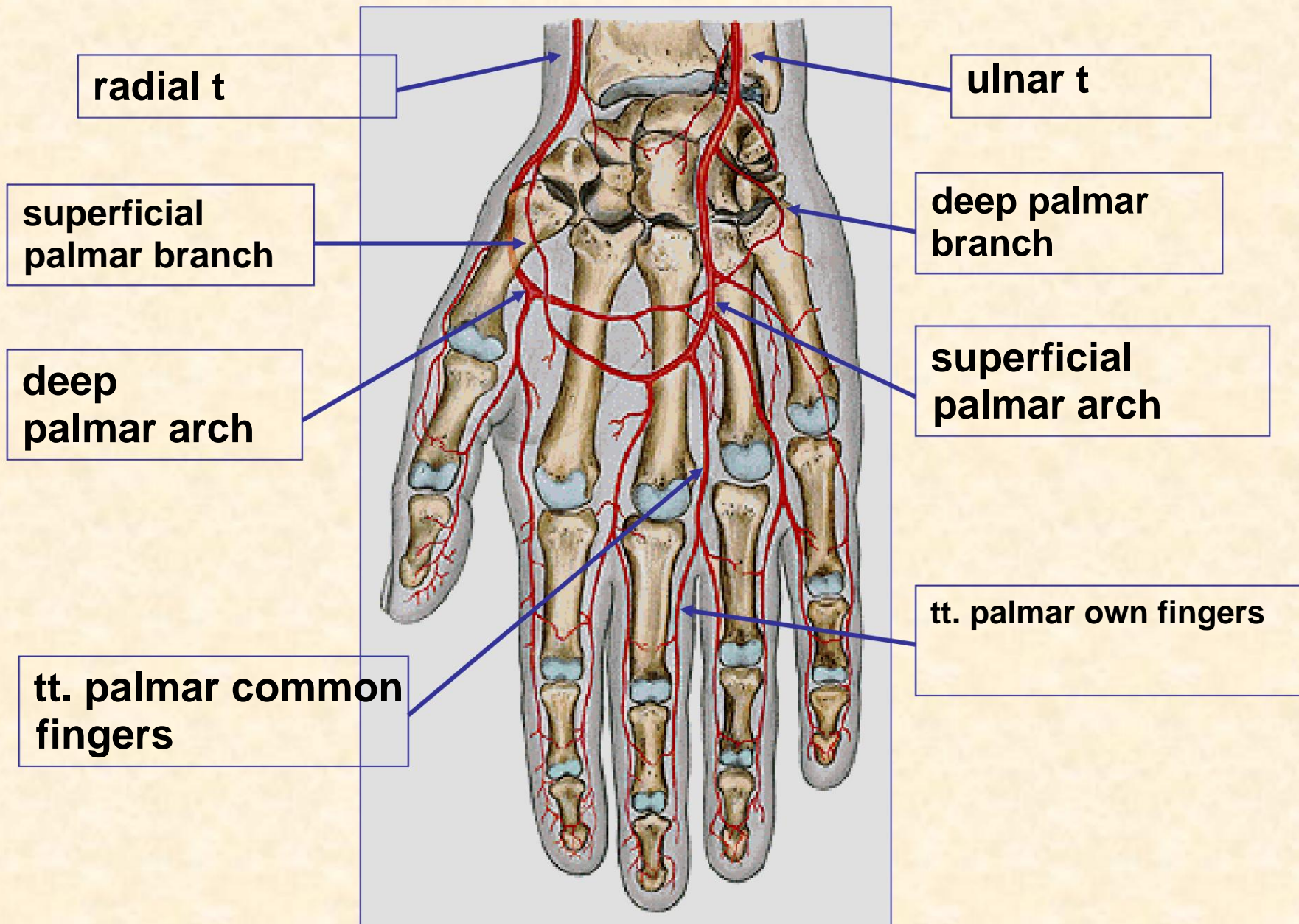
ARTERY VASCULARITY OF THE UPPER LIMB



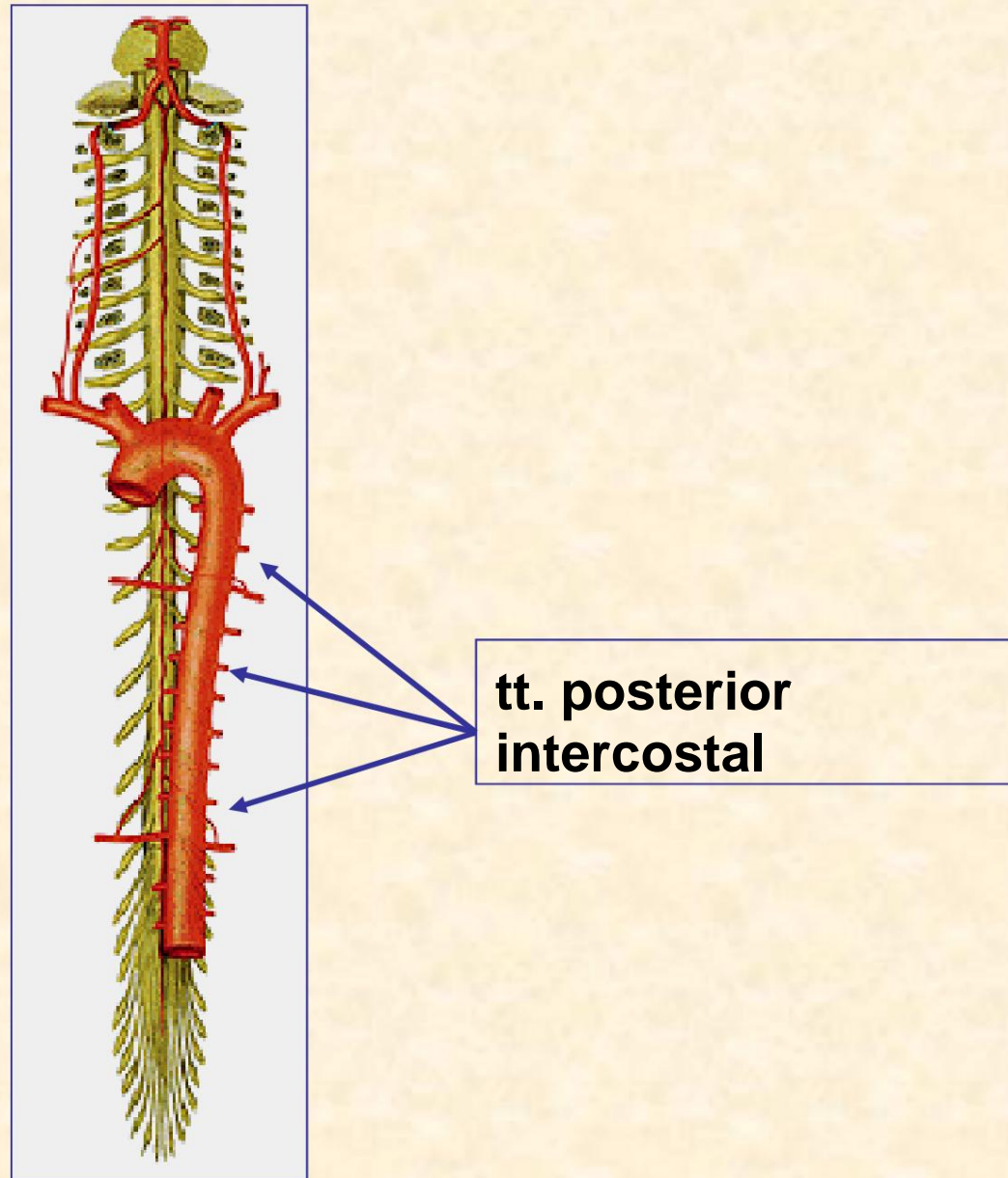
ARTERY VASCULARITY OF THE UPPER LIMB



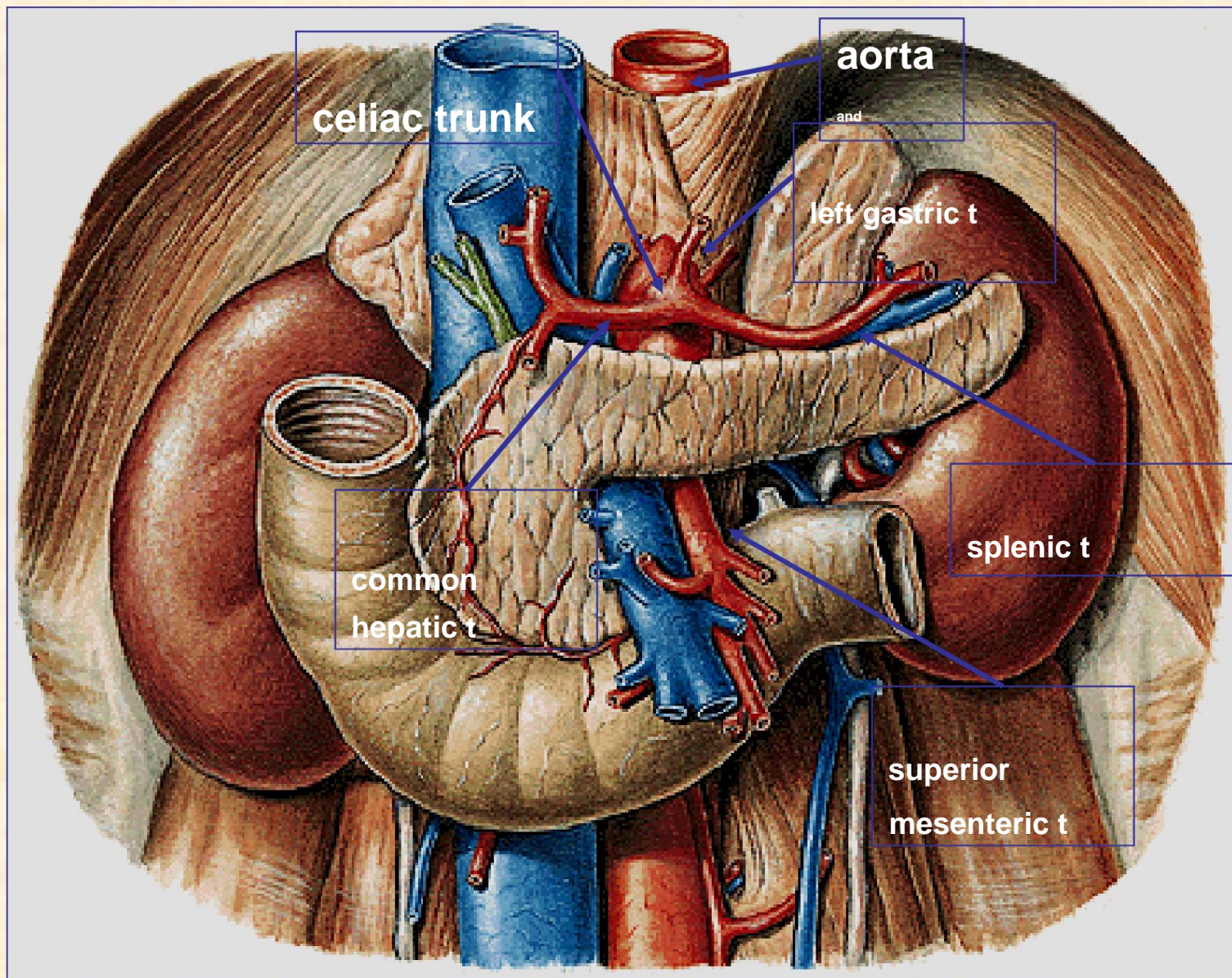
PALM BOW



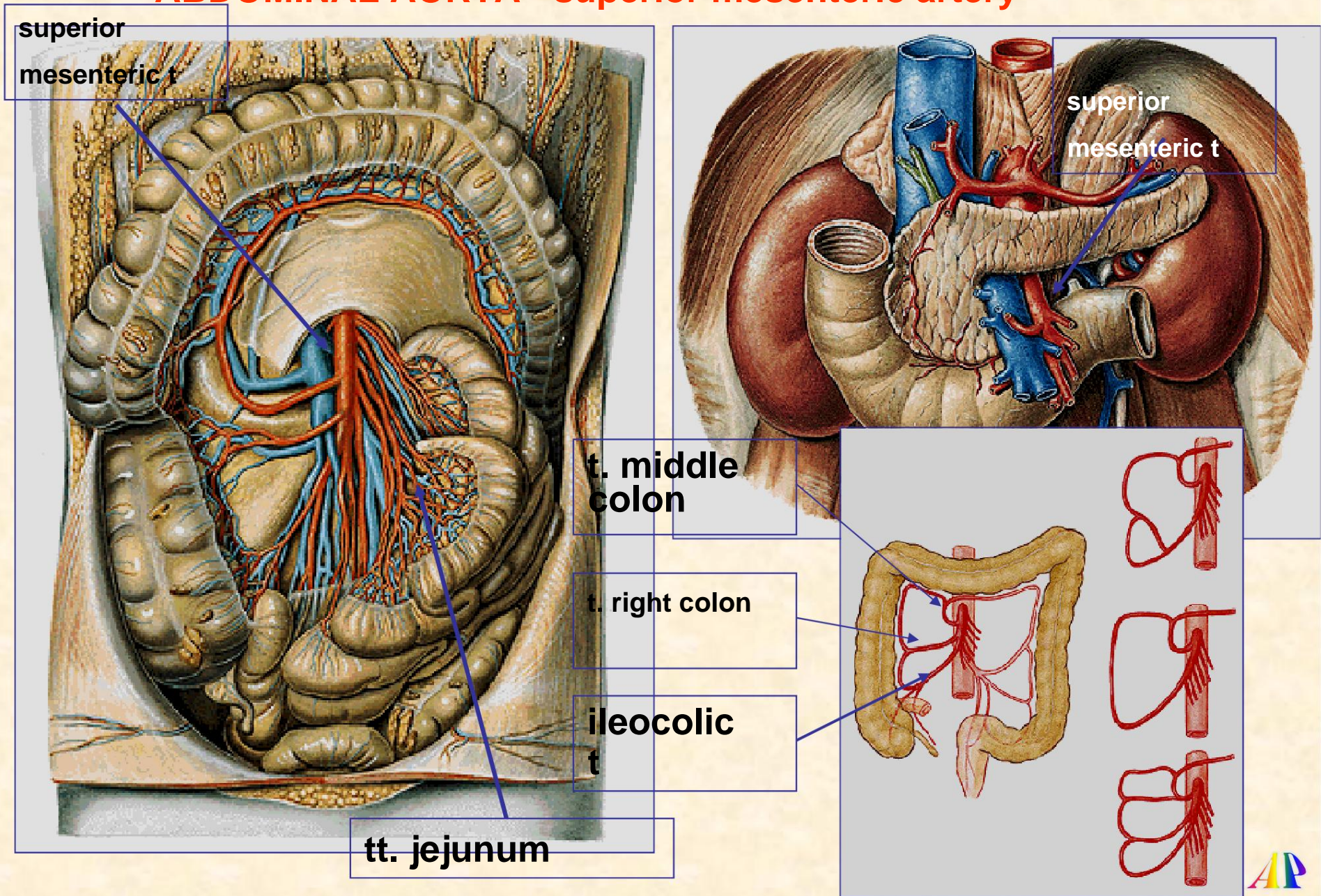
THORACIC AORTA



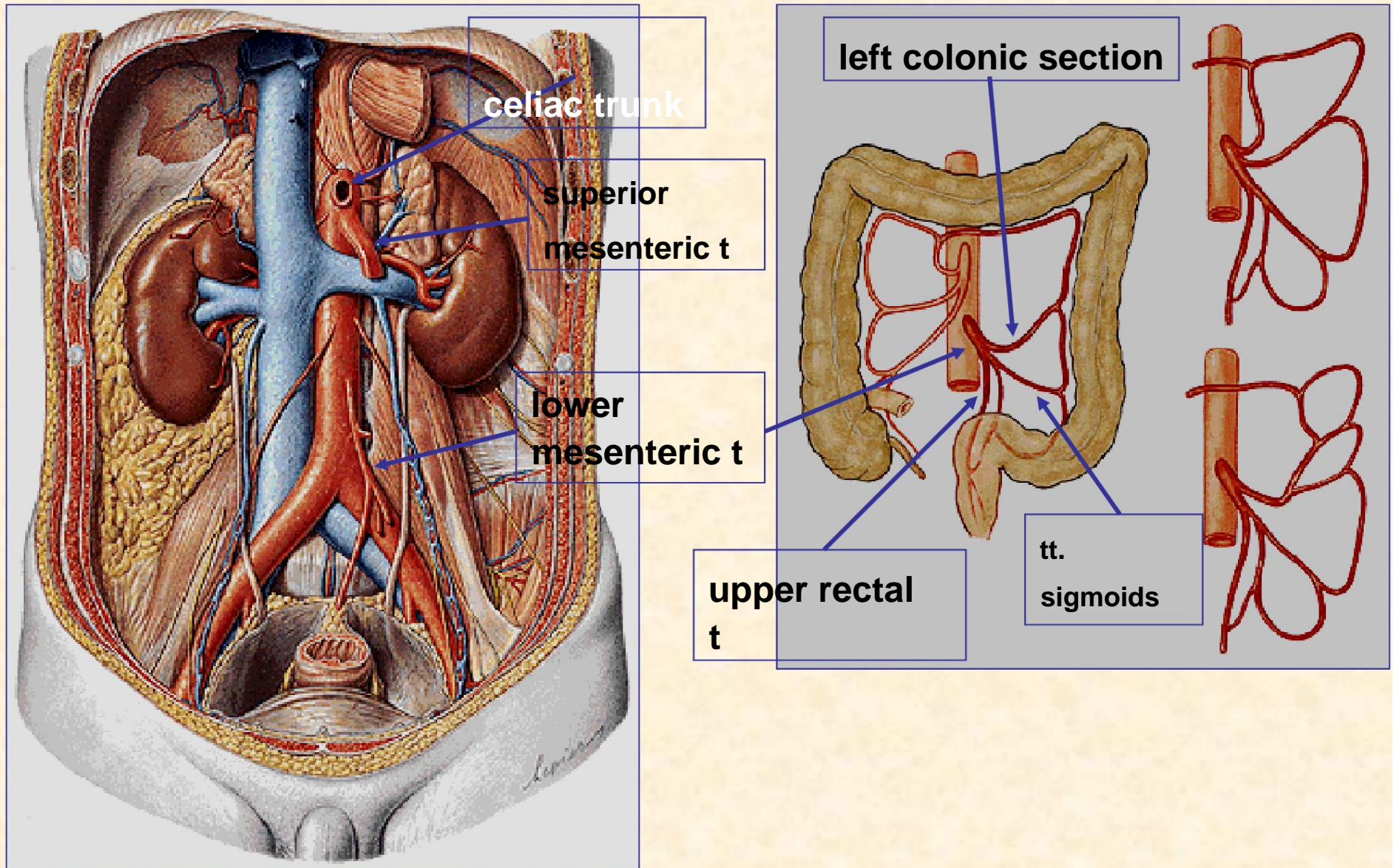
ABDOMINAL AORTA - celiac trunk



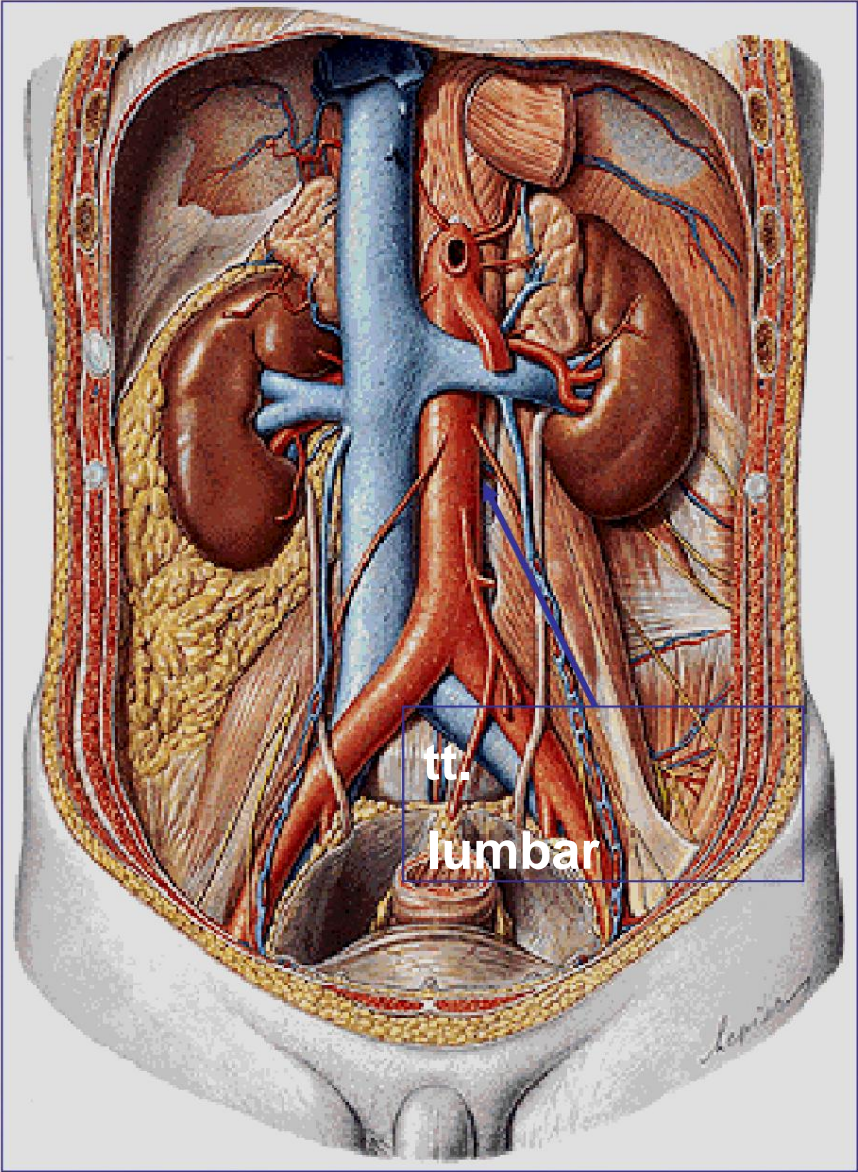
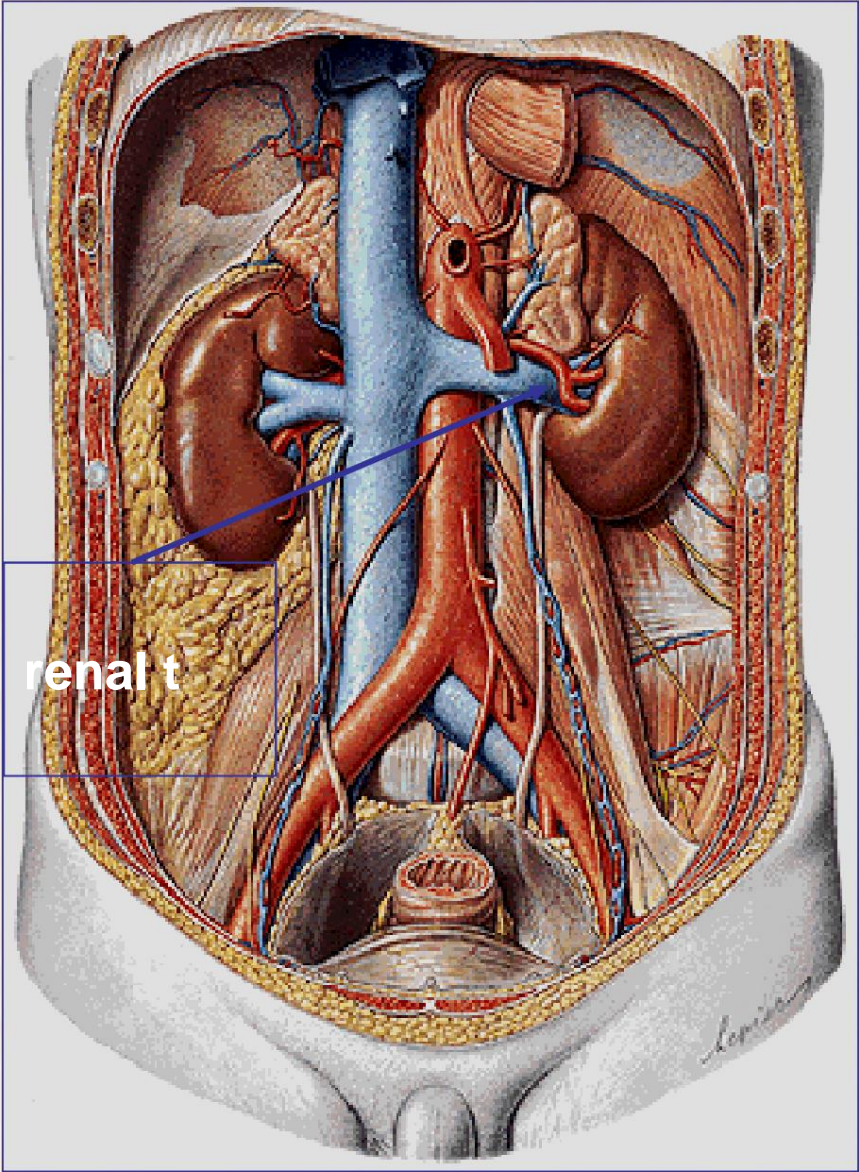
ABDOMINAL AORTA - superior mesenteric artery



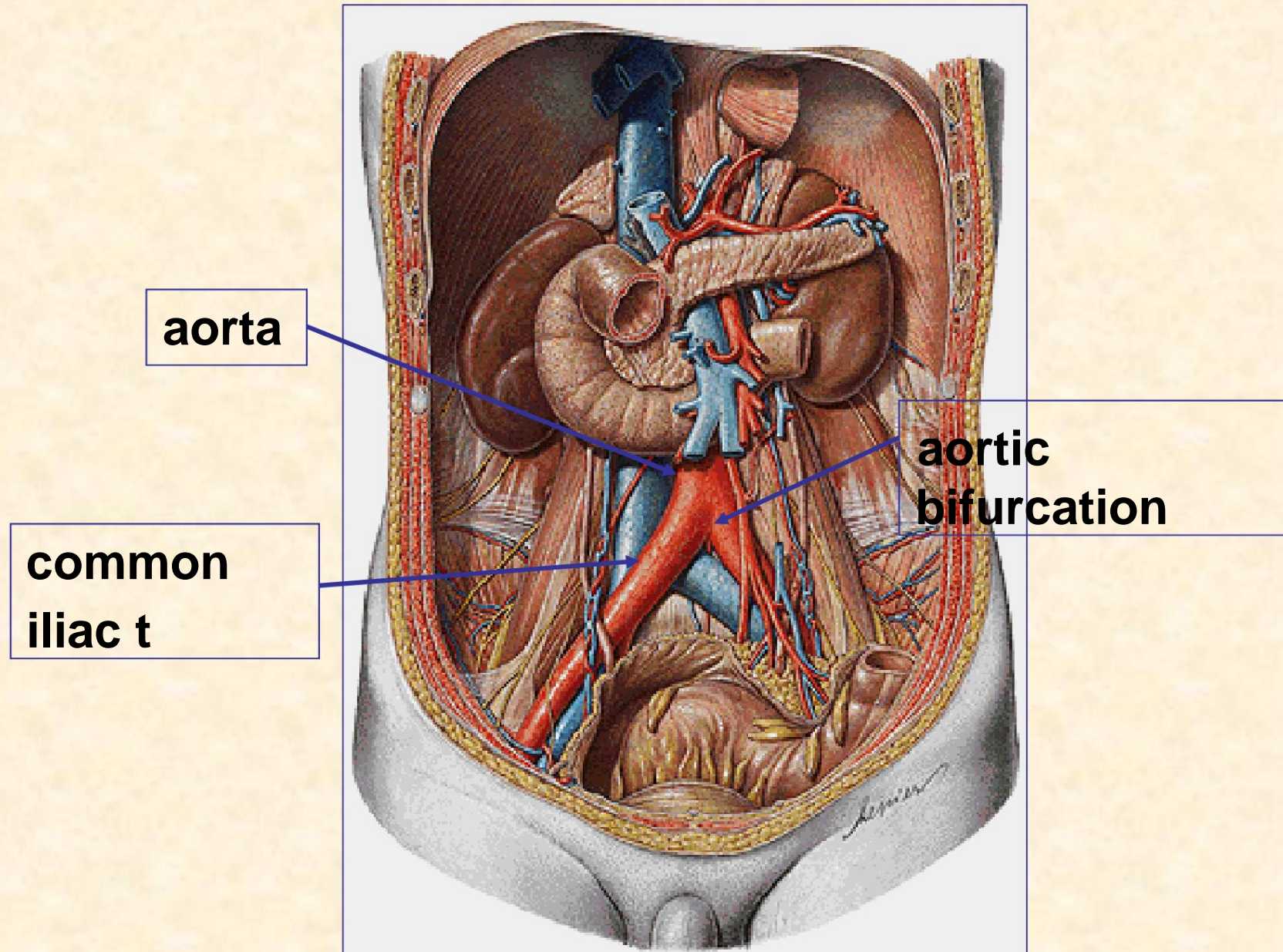
ABDOMINAL AORTA - lower mesenteric section



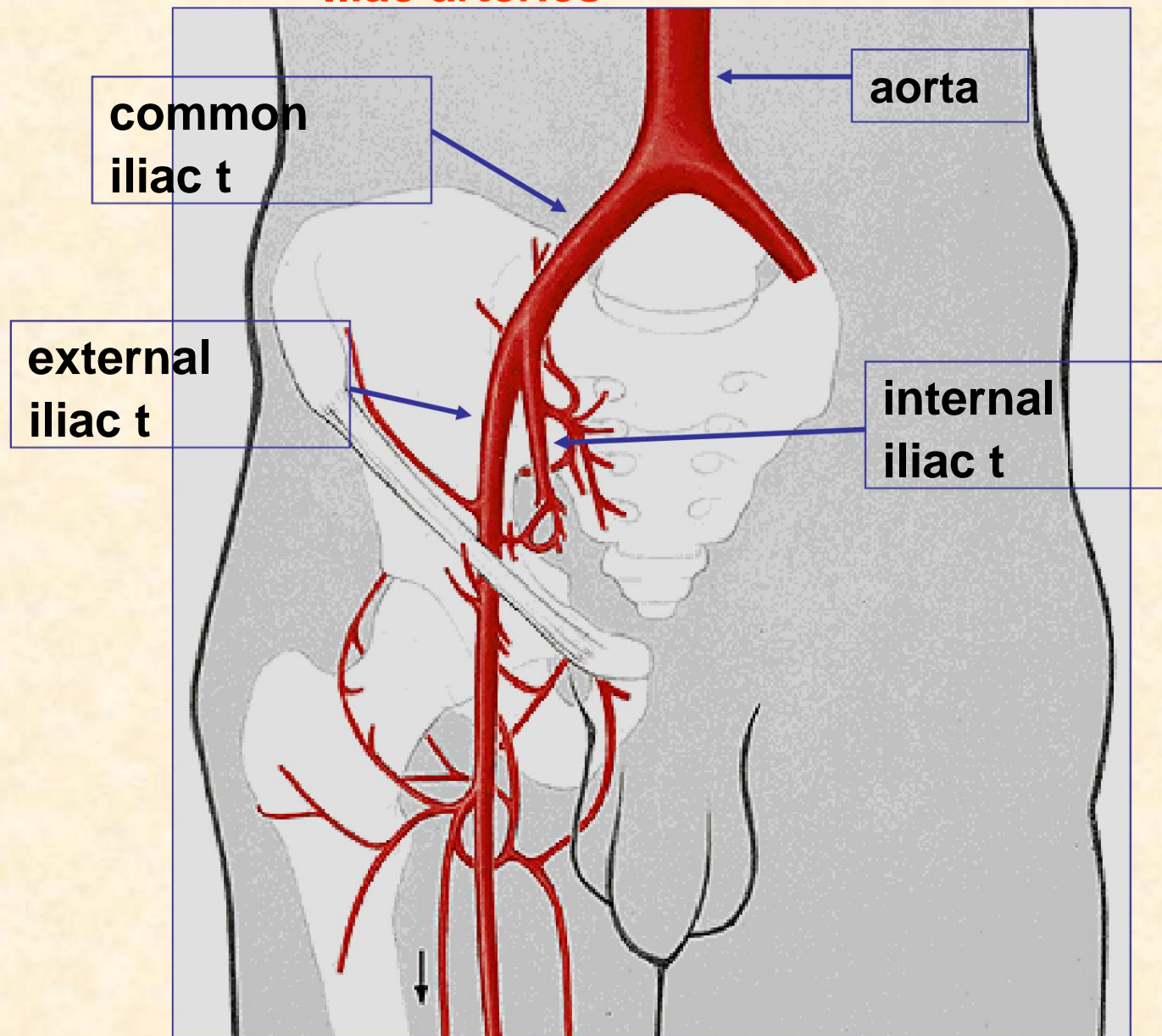
ABDOMINAL AORTA



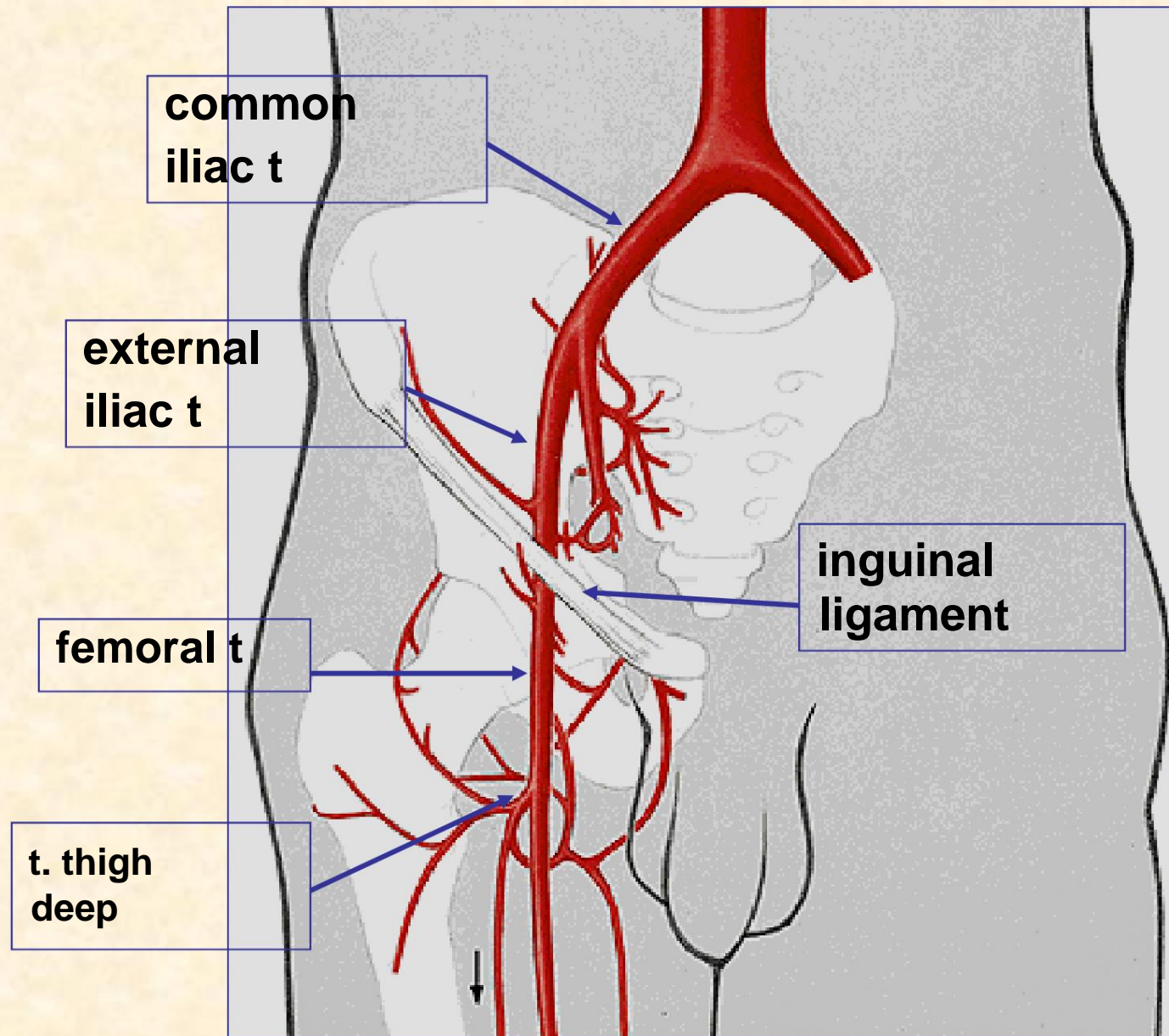
AORTA BIOPARATION



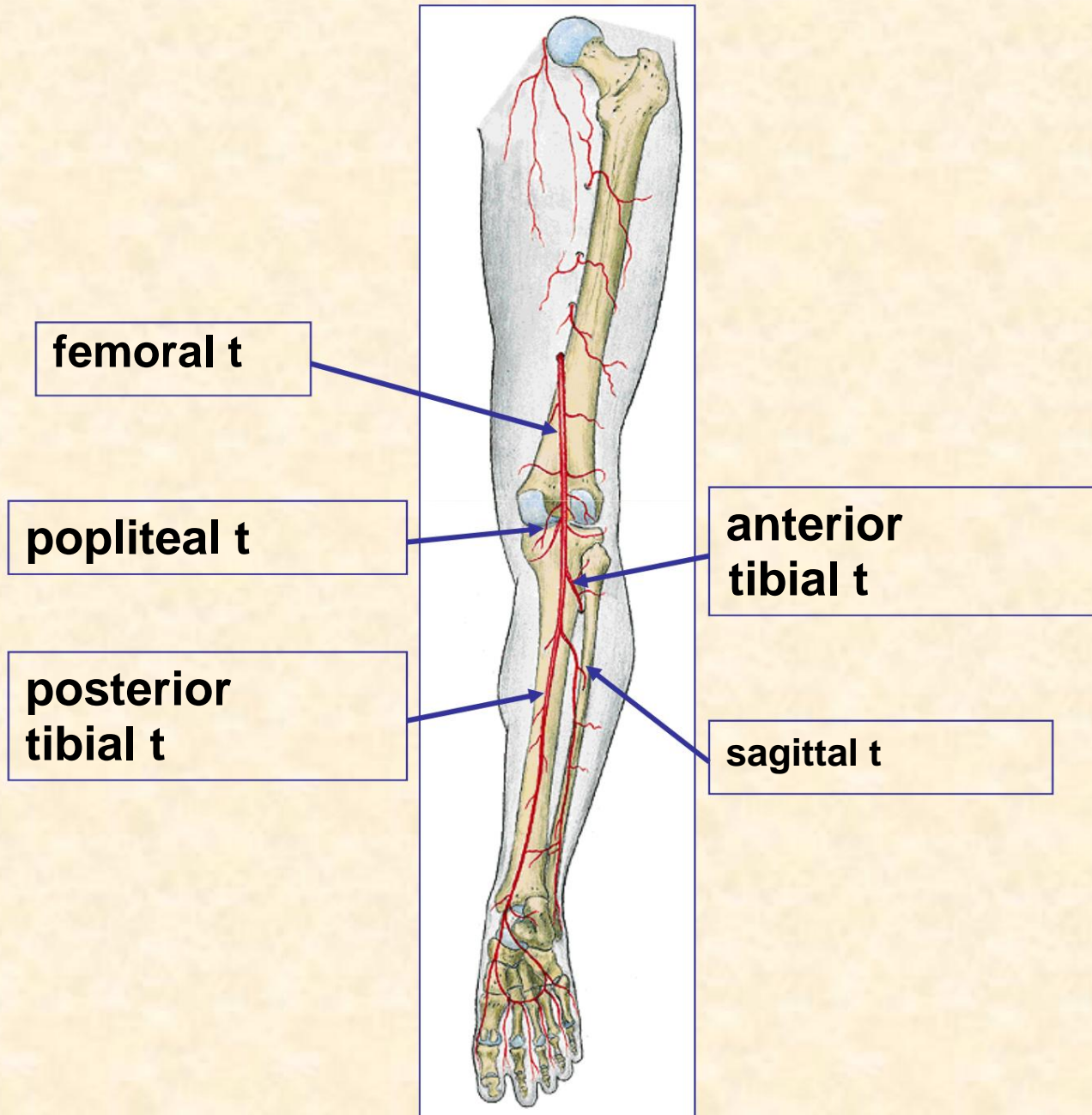
Iliac arteries



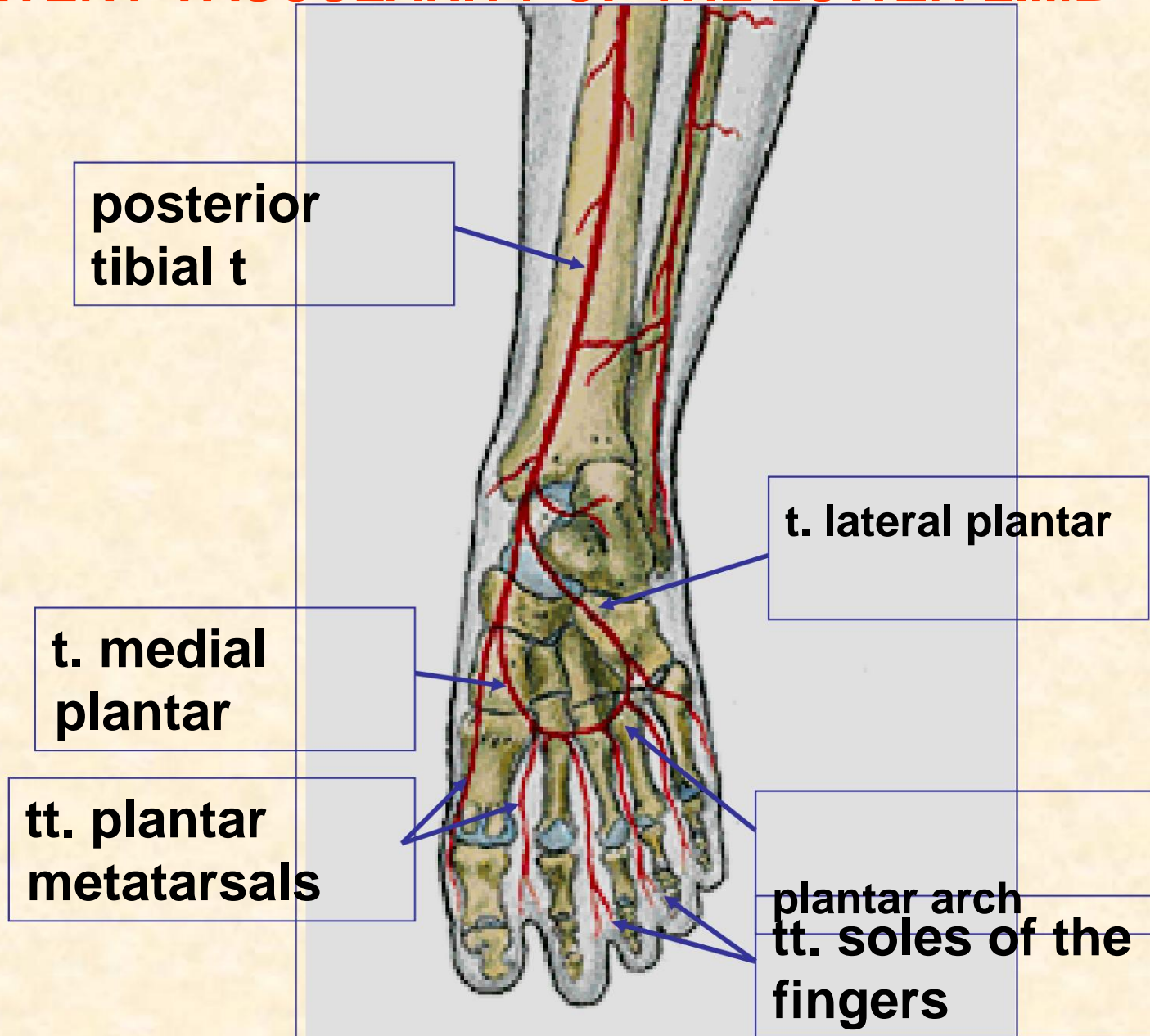
ARTERY VASCULARITY OF THE LOWER LIMB



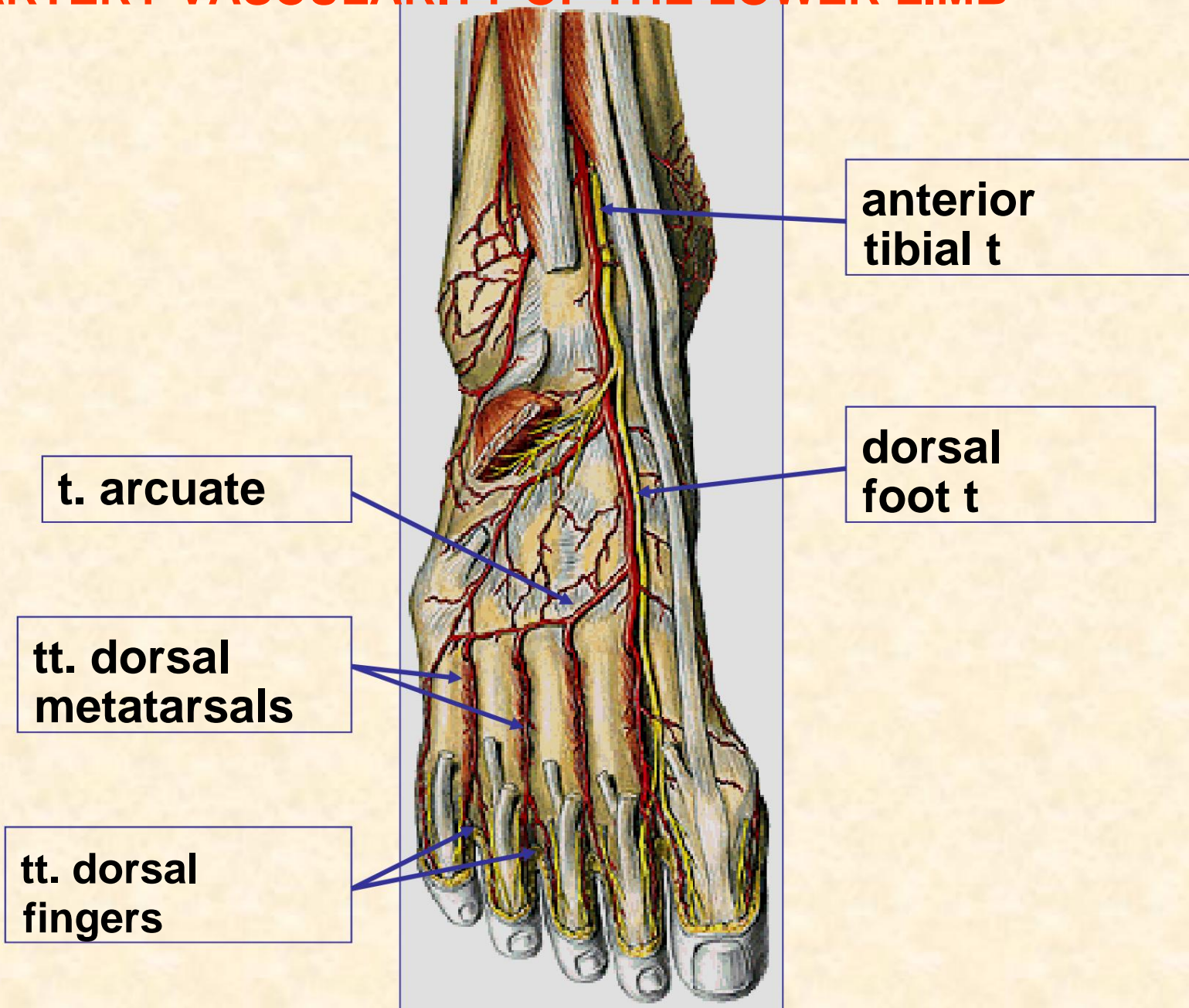
ARTERY VASCULARITY OF THE LOWER LIMB



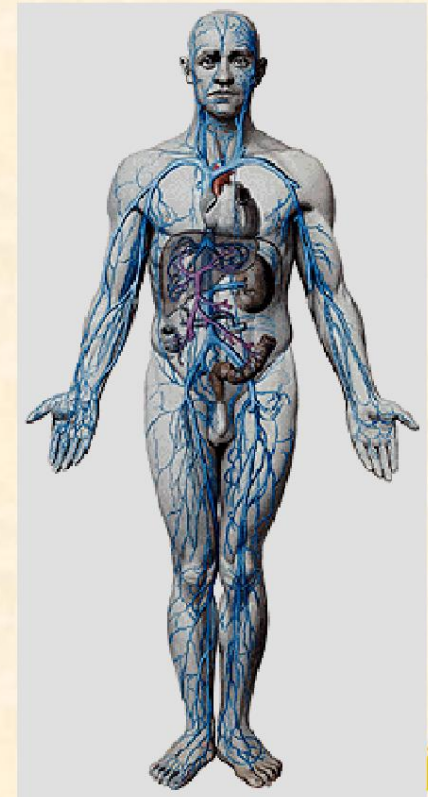
ARTERY VASCULARITY OF THE LOWER LIMB



ARTERY VASCULARITY OF THE LOWER LIMB



VENOUS SYSTEM



VENOUS SYSTEM OF THE LOWER LIMBS DIVISION

- **Superficial (cutaneous) veins:**

- great saphenous

- vein great saphenous vein

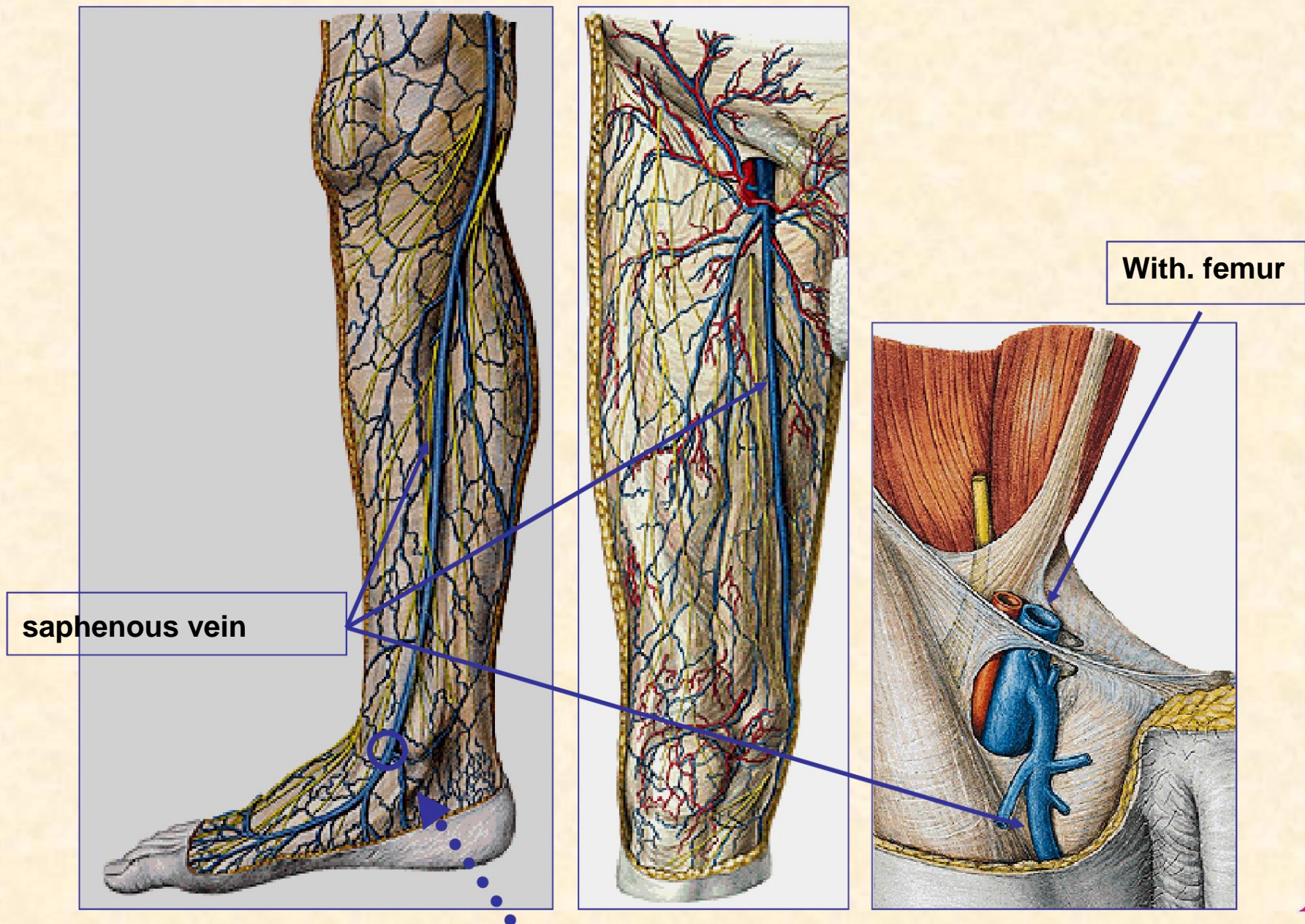
- **Deep veins:**

- feet

- lower

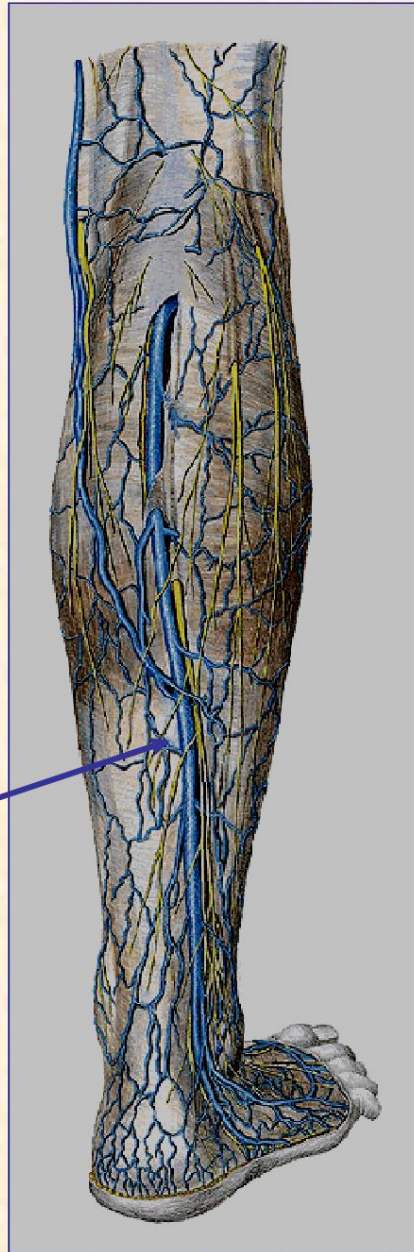
- thighs

SUPERFICIAL VEINS OF THE LOWER LIMB



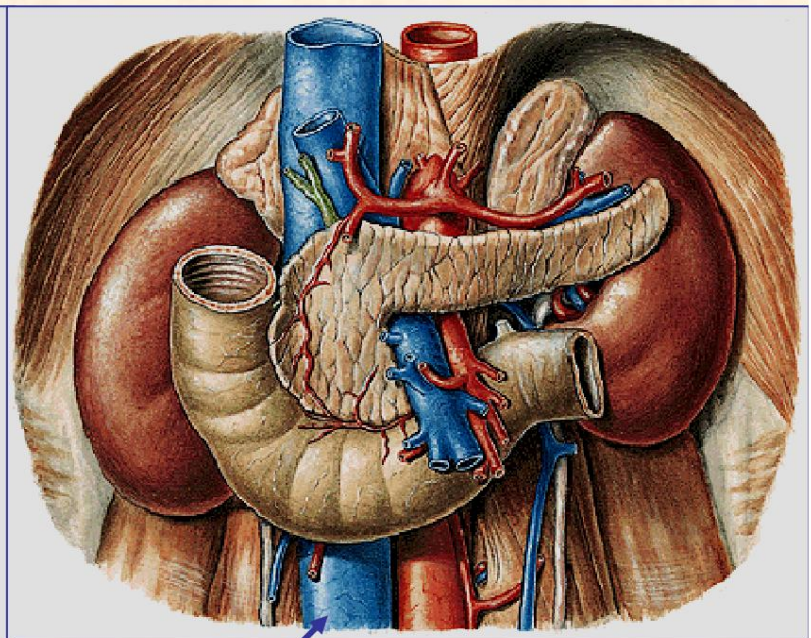
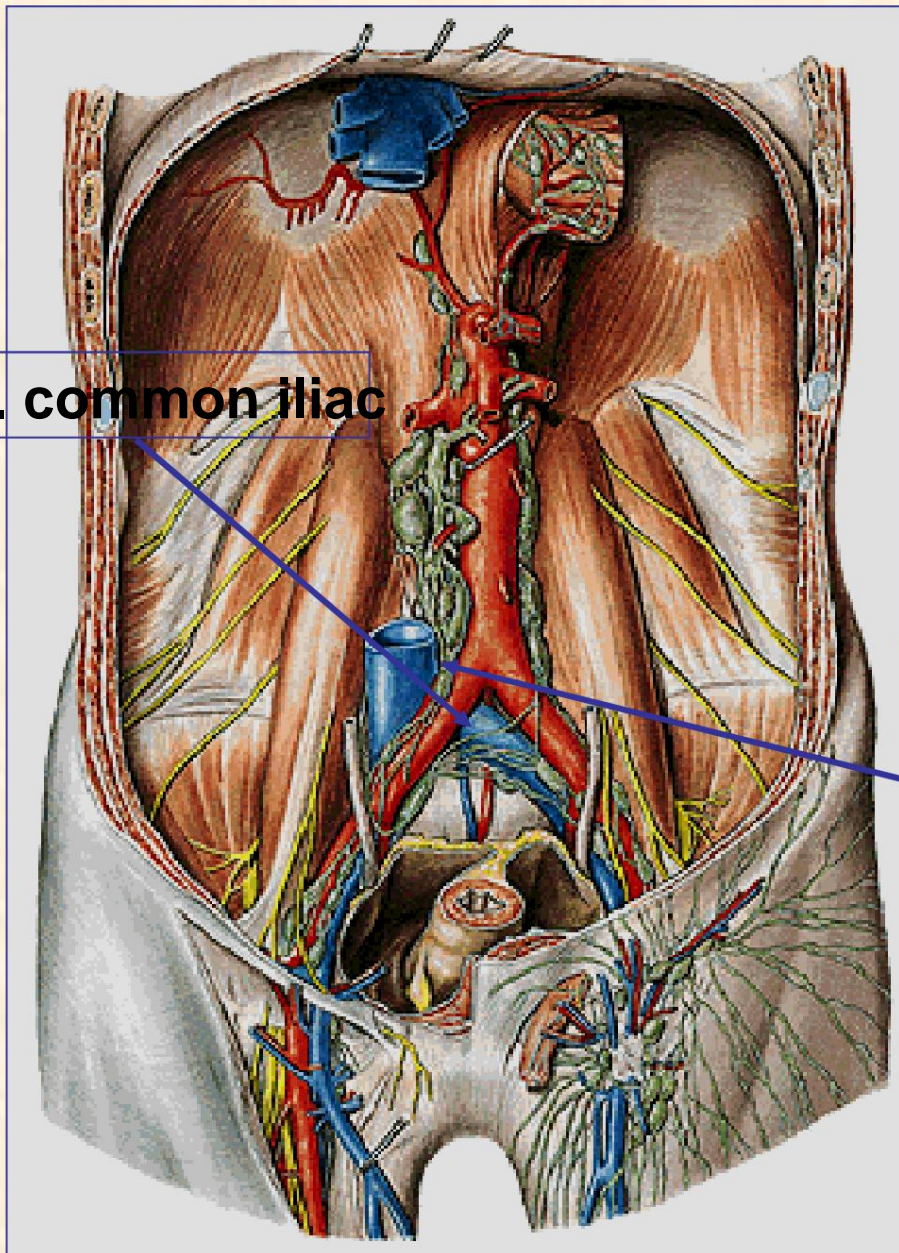
SUPERFICIAL VEINS OF THE LOWER LIMB

WITH. sniper



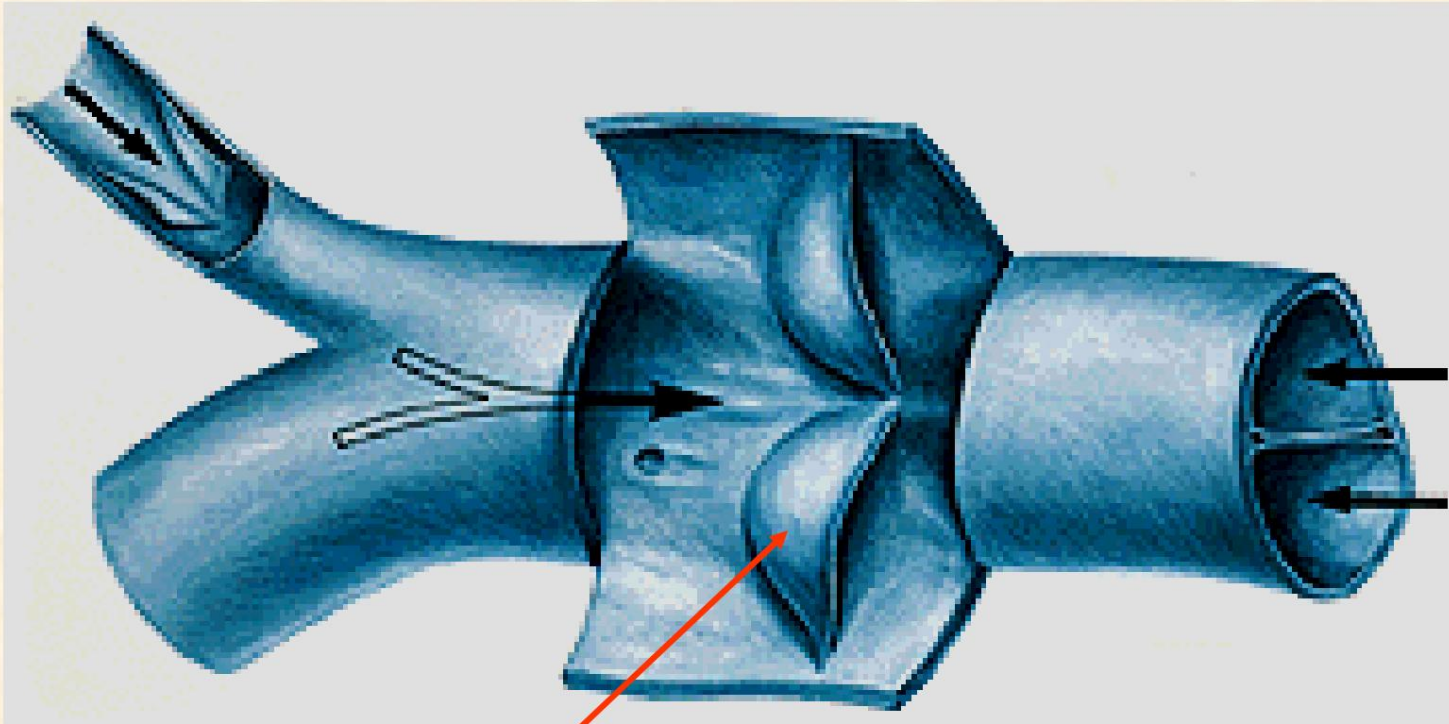
DEEP VEINS OF THE LOWER LIMB

With. common iliac



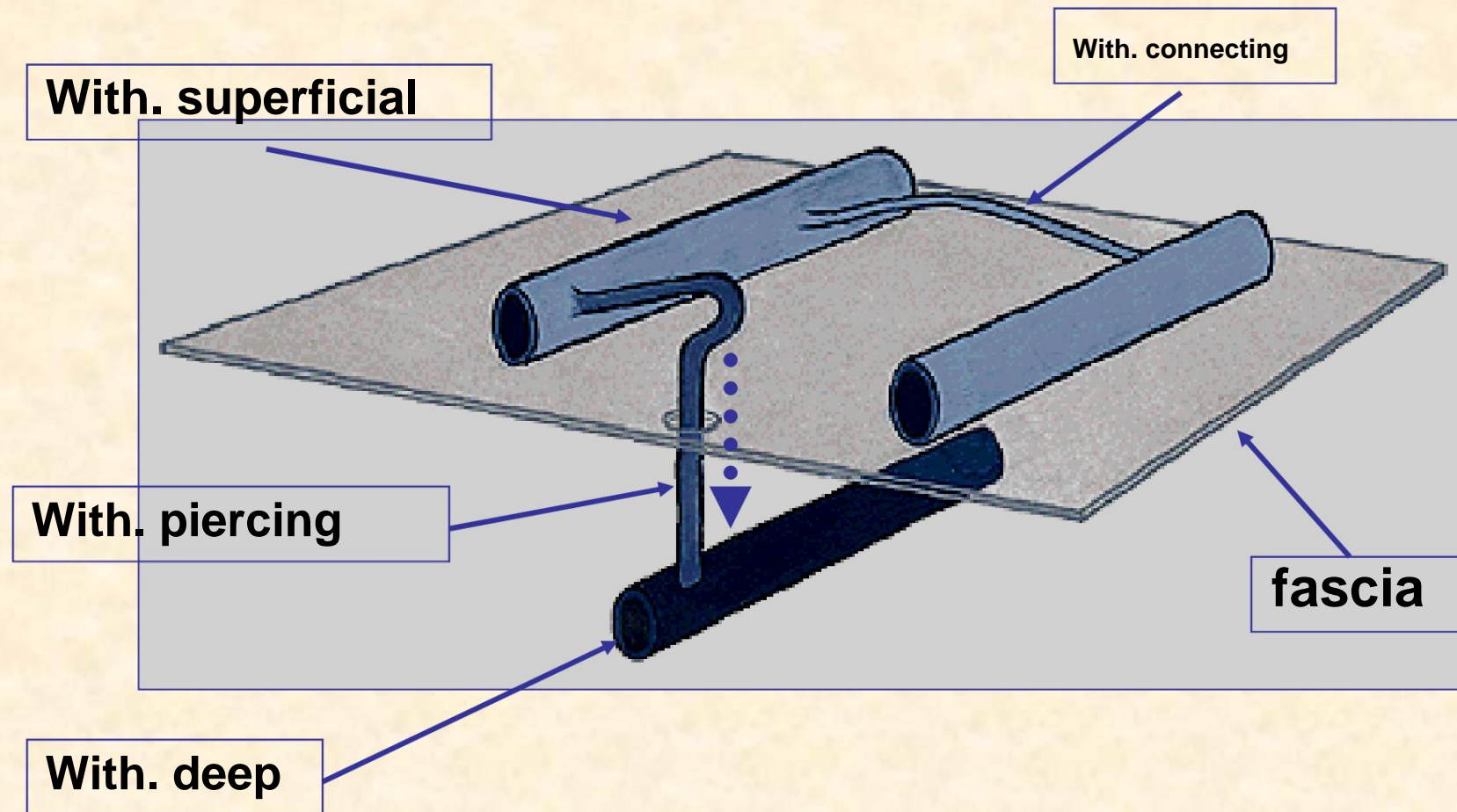
With.
main lower

VENOUS VALVES



valve

VENOUS SYSTEM CONNECTIONS SUPERFICIAL AND DEEP



VENOUS SYSTEM OF THE UPPER LIMBS

division

- **Superficial (cutaneous) veins:**

basilic vein

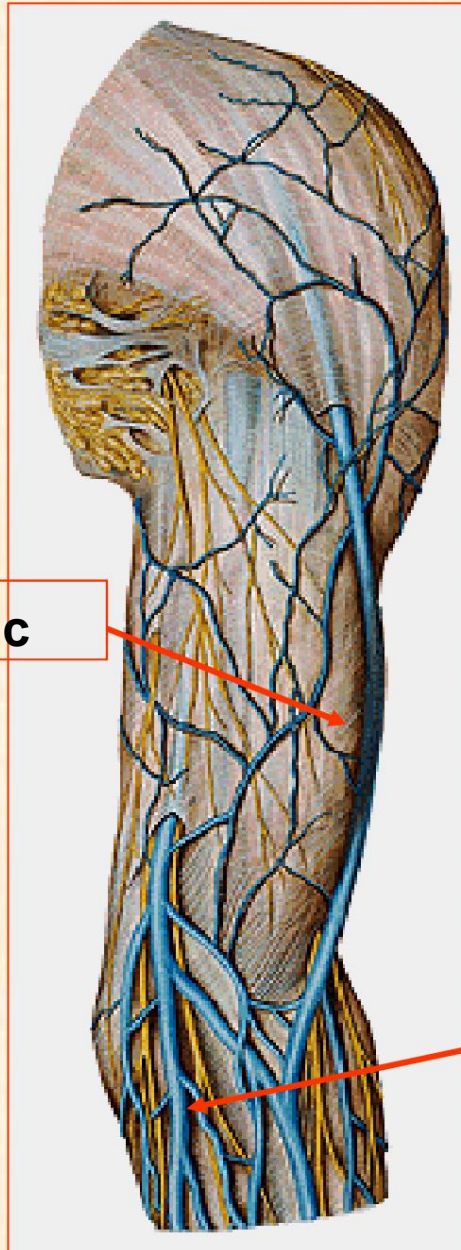
cephalic vein

- **Deep veins:**

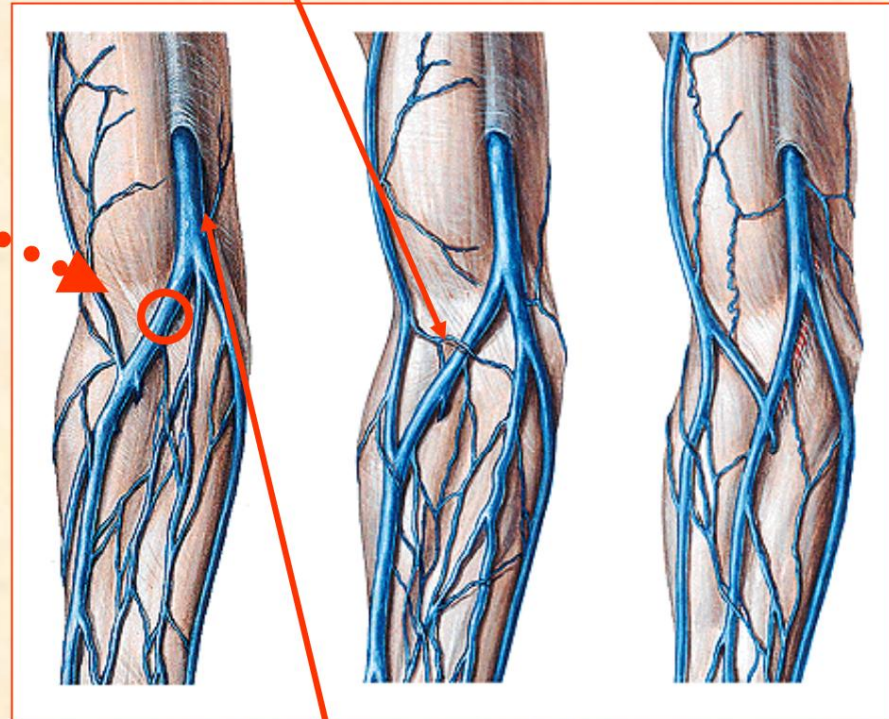
**hand, forearm
arm**

SUPERFICIAL VEINS OF THE UPPER LIMB

With. cephalic



With. medial elbow



With. basilic

